



Allianz Global Assistance

# Top DVA approved **products** **catalogue**

Global Assistance

**Allianz** 

## CONTENTS

<b>AA</b>	<b>3</b>	Alarms System/Communication Appliances/Assistive Listening Devices
<b>AB</b>	<b>4</b>	Beds / Bedding / Pressure Care
<b>AC</b>	<b>17</b>	Chairs / Seats
<b>AD</b>	<b>23</b>	Continence Products
<b>AE</b>	<b>24</b>	Cushions / Supports
<b>AH</b>	<b>29</b>	Eating / Kitchen / Household Adaptive Appliances
<b>AL</b>	<b>38</b>	Home Modifications
<b>AM</b>	<b>47</b>	Lifting Devices
<b>AP</b>	<b>49</b>	Mobility Appliances
<b>AR</b>	<b>64</b>	Orthoses – Splints / Supports / Braces / Slings
<b>AS</b>	<b>68</b>	Other Appliances
<b>AT</b>	<b>69</b>	Palliative Care Appliances
<b>AU</b>	<b>70</b>	Personal Hygiene / Grooming / Dressing Appliances
<b>AV</b>	<b>73</b>	Physiotherapy Appliances
<b>AZ</b>	<b>75</b>	Showering / Bathing Appliances
<b>BD</b>	<b>81</b>	TENS Equipment
<b>BE</b>	<b>82</b>	Toileting Appliances
<b>WA</b>	<b>89</b>	Grafton WA only products

# We are Allianz Global Assistance. We help people, every day, all around the world—that's what it means to be the world's leading assistance company.

Previously we were known as Mondial Assistance Australia though we have been part of the Allianz Group for more than ten years. As an assistance company, we have a unique and valuable offering in connecting people in need with professionals who can help—whether that is roadside, travel, emergency medical, health or home assistance. We put the needs and wellbeing of the people we serve first. It is at the heart of everything we do. It is this assistance philosophy, this desire to help others that sets us apart.

We are a nationally contracted DVA supplier and also supply nationally to other commonwealth departments and programs. We have the largest range of DVA approved MFS products and are the home modification specialists with 2,500 trade providers nationally. We are also a preferred supplier of rehabilitation equipment to Healthscope medical facilities. You can depend on us to deliver the correct equipment in a timely manner to your clients. Our case management approach will ensure you are kept informed of your order until it is in the hands of your client.

With close to 600 employees in Australia and more than 10,000 employees worldwide, we help someone, somewhere in the world every two seconds.

How can we help you?

## KEY:

### Who can order these products?

- |  |                                  |
|--|----------------------------------|
| <b>CH</b> Chiropractor   | <b>OT</b> Occupational Therapist |
| <b>LM</b> Local Medical Officer (or other GP)                            | <b>RN</b> Registered Nurse       |
| <b>OS</b> Osteopath  | <b>A</b> Audiologist             |
| <b>PH</b> Physiotherapist  | <b>AT</b> Audiometrist           |
| <b>PD</b> Podiatrist   | <b>CA</b> Continence advisor     |
| <b>S</b> Specialist (includes all medical specialists in relevant field) | <b>PC</b> Pain Clinic            |
|  | <b>EP</b> Exercise Physiologist  |
|  | <b>SP</b> Speech Pathologist     |

### Can you hire or buy these products?

- HIRE** This product is available for hire only.
- BUY** This product is available to purchase only.

## Five ways we make things easier for you...

# 1

### Prescribing made easy

#### 4 Ways to Prescribe Your MFS Order

Whether you're old school or embrace the digital age, you can prescribe with us with the knowledge that your order will be in the hands of a team of experienced professionals.

Simply prescribe – leave the rest to us!

1. Order by fax 1800 653 556 or +61 7 3360 7867
2. Order by email at [mfs@allianz-assistance.com.au](mailto:mfs@allianz-assistance.com.au)
3. Order online at [www.mobilityservices.com.au](http://www.mobilityservices.com.au)
4. Order by iPad App – contact us via email at [hsrcm@allianz-assistance.com.au](mailto:hsrcm@allianz-assistance.com.au) for a FREE Demo

# 2

### Product knowledge and empathetic support

Our dedicated team can help you with any product queries from our extensive range of more than 4000 products. We also manage a professional network of delivery and installation experts, who care about you and the veterans' needs.

Contact our product and home modification experts on:-

Call: 1800 857 715

Email: [mobility@allianz-assistance.com.au](mailto:mobility@allianz-assistance.com.au)

Fax: 1800 653 556 or +61 7 3360 7867

# 3

### Fast turnaround and extensive support

We have a national equipment supplier network, so if your local area is out of stock we will fill your order from another region. We also manage one of the largest networks of trade providers across Australia and we are happy to add your local providers into our network.

# 4

### Dedicated Health Services Relationship Managers

Our team of Health Services Relationship Managers are always on hand to help. This team is situated across Australia and work hand-in-hand with Health Professionals for the benefit of DVA veterans.

# 5

### End-to-end case management

We are more than an equipment supplier that takes and fills orders. From the moment we receive an order, we take full responsibility and case manage the process right through to the final delivery or installation.

## AA11 – Door Bell with Signal Light (Hearing impaired appliance)



AA11

**High Volume Wireless Door Bell****Code: ED5002****BUY**

A portable doorbell designed for the hearing impaired, with strobe lighting, 7 alternative chime melodies and 16 changeable codes to prevent interference. Operating range up to 45 metres. Easy to mount push button.

Available to:



## AA16 – Sensor Mat – low frequency



AA16

**Stand-Up Floor Alarm – Pressure Mat****Code: 444F****BUY**

Pressure alarm mat with alarm box. Normally used with people who stand up from a chair or get out of bed and could fall over but also useful for dementia patients who may put themselves or others in danger if they leave the room. Other alarms also available 444B Bed, 444C Chair, 444D Doorway, 444EC 10m extension cord for alarm box.

Width	Length
1360	650

Available to:



## AB01 – Bed – Adjustable Electrical



### Invacare Etude Plus bed complete unit

Code: ETUDE\_4D1544211\_PO

HIRE

Etude Plus bed complete unit. 4 section electric bed including head and foot boards. Built-in low brackets makes the Etude Plus height adjustable from 330mm-730mm or 400mm-800mm. Choice of metal or wooden side rails available. Range of accessories also include self-help pole, support handle and mattress support extension.

Width

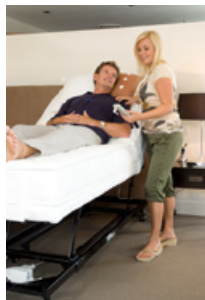
900

Depth/ Length

1900

AB01

Available to:



### Adjustable Electric Bed – Homecare Hi-Lo

Code: LIB-HILO

HIRE

Adjustable Electric Bed – Liberty HealthCare Homecare Hi-Lo homestyle bed. Head and Leg Lift (head and knee break) and Hi-lo function. Base only, no mattress. Please specify size: 3'0" Single, 3'6" King Single, 4'6" Double, 5'0" Queen. Maximum weight capacity – Singles 280kg, Double and Queen 320kg. Bed rails, side grip handle and mattresses available separately. Double and Queen only available in exceptional clinical circumstances.

Depth/ Length

2030

AB01

Available to:



### Community Bed

Code: ED5117

HIRE

A simple yet stylish design, the Community Bed is an electronically controlled bed for aged care or home environments. Made of solid construction for strength, safety and stability. The extensive lifting range (340 – 750mm) and bed base functionality make getting in and out of bed easy. Standard features, such as the Support Pole for patient lifting assistance, plus a range of other optional accessories further simplify day to day living and care. Maximum weight capacity – 120kg. Base only no mattress.

Width

930

Depth/ Length

2200

AB01

Available to:



**AB02 – Bed Back Rest – Manual**



AB02

**Bed Back Rest – Adjustable**

**Code: AA3612**

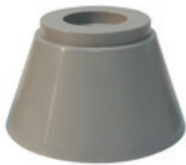
**BUY**

This backrest can be adjusted by a simple ratchet mechanism. Steel with Canvas Back Support.

Width	Height	Depth
570	600	500

Available to: [OT](#) [RN](#) [PH](#) [LM](#) [S](#) [CH](#) [OS](#)

**AB03 – Bed Blocks**



AB03

**Bed Raising Block – Plastic Elephant Feet  
100mm – Set of 4**

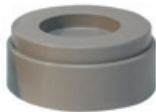
**Code: BR100/4AB**

**BUY**

100mm high, tough plastic brick for raising beds or chairs for easier access. Set of 4.

Width	Height
195	100

Available to: [OT](#) [RN](#) [PH](#) [LM](#) [S](#) [CH](#) [OS](#)



AB03

**Bed Raising Block – Plastic Elephant Feet  
40mm – Set of 4**

**Code: BR40/4AB**

**BUY**

40mm high tough plastic brick for raising beds and chairs for easier access. Set of 4. Can also be stacked on top of 100mm block to raise by 140mm.

Width	Height
125	40

Available to: [OT](#) [RN](#) [PH](#) [LM](#) [S](#) [CH](#) [OS](#)


**Bed Raising Block- 75mm Raise,  
Universal 3 Hole Fit**

Code: E380

**BUY**

Versatile timber bed raising block that will increase the height of beds, chairs, couches or tables. Fits most square and round furniture legs. With 25, 50 and 75mm holes. Height 75mm. Single Unit.

**Height**

75

AB03

Available to: [OT](#) [RN](#) [PH](#) [LM](#) [S](#) [CH](#) [OS](#)
**Custom Made Wooden Bed Blocks,  
Set of 4**

Code: RXBLW

**BUY**

Wooden bed blocks custom made to suit diameter of existing legs and required height. Please specify required dimensions. Set of 4.

AB03

Available to: [OT](#) [RN](#) [PH](#) [LM](#) [S](#) [CH](#) [OS](#)

## AB06 – Bed Cradle


**Bed Cradle Adjustable Height**

Code: BEA014600

**BUY**

Designed to fit under the mattress to keep bed covers clear of feet and legs. Adjustable height 480-700mm.

AB06

Available to: [OT](#) [RN](#) [PH](#) [LM](#) [S](#) [CH](#) [OS](#)



# AB08 – Bed Stick



## Bed Pole Single Cobra

Code: BEA014000

[BUY](#)

Fits under the mattress and provides a handle to assist with moving and positioning in bed. Suitable for use on single, double, queen and king size beds.

### Height

510

AB08

Available to: [OT](#) [RN](#) [PH](#) [LM](#) [S](#) [CH](#) [OS](#)



## Bed Pole Grip Handle

Code: BEA014200

[BUY](#)

Fits under the mattress and provides a firm handle to assist with moving and positioning in bed. The shaped handle can be located in four positions for added user comfort. Suitable for use on single, double, queen and king size beds.

AB08

Available to: [OT](#) [RN](#) [PH](#) [LM](#) [S](#) [CH](#) [OS](#)



## Side Grip Handle for LIB-HILO

Code: SGH

[BUY](#)

Side Grip Handle to suit LIB-HILO Homecare Hi-Lo bed by Liberty HealthCare. Clamps on to bed frame.

AB08

Available to: [OT](#) [RN](#) [PH](#) [LM](#) [S](#) [CH](#) [OS](#)



## Bed Stick – Single Upright, Universal Fit, 180 Deg Safety Return

Code: E313DR

[BUY](#)

This bed stick can be used in either left or right hand side positions.

AB08

Available to: [OT](#) [RN](#) [PH](#) [LM](#) [S](#) [CH](#) [OS](#)

## AB09 – Bedside Rail



AB09

### Bed Rail

Code: BEA013600

BUY

This removable bed rail fits under a mattress and gives firm support. Fabricated from epoxy powder coated mild steel tube.

Available to:



AB09

### Scala metal side rail for Etude Duo

Code: 1528930-0154

BUY

Serves as a preventive feature against patient's falling out of bed. Can be fitted or removed without the necessity of using any tools. The full length cotsides lock into place and lower to below the mattress.

Available to:



AB09

### Bed Rails for LIB-HILO

Code: BRD1370

BUY

Collapsible Bed rails (pair) to suit LIB-HILO Homecare Hi-Lo bed by Liberty HealthCare. Please specify size of bed.

Available to:



AB09

### Bed rails for Community Bed

Code: ED5193

BUY

Side Rails attach firmly to bed base frame of ED5117 Community Bed. Simply pull the pin to collapse the side rail, for ease of patient access and transfer. Sold as a pair.

Available to:




**Bed Support Rail Small for Community Bed**

Code: ED5209

[BUY](#)

Attach to the side of the bed for additional transfer support. Also available in ED5216 Large 430mm x 410mm.

Width	Height
340	370

AB09

Available to: [OT](#) [RN](#) [PH](#) [LM](#) [S](#) [CH](#) [OS](#)
**Bed Rail Protectors – Standard size**

Code: ED5247

[BUY](#)

Bed Rail Protectors (Pair) Standard 335mm x 1260mm. Super soft foam cushion covered with a soft, two way stretch PU cover, with easy secure hook and loop closure. Also available in ED5254 Large 980mm x 1580mm.

Width	Height	Depth
335	1260	25

AB09

Available to: [OT](#) [RN](#) [PH](#) [LM](#) [S](#) [CH](#) [OS](#)
**Bed Safety Crash Mat**

Code: ED5261

[BUY](#)

Place on floor beside bed as a protective cushion to help prevent injury. Especially useful where side rails cannot be used. Slip resistant textured underside, reflective strips on edges for enhanced night time visibility, folds for easy storage when not in use.

Width	Height	Depth
600	50	1750

AB09

Available to: [OT](#) [RN](#) [PH](#) [LM](#) [S](#) [CH](#) [OS](#)

AB11 – Sheepskin Rugs / Foot / Heel / Elbow Pads



AB11

**Sheepskin, Body Size, double length** **Code: EA852** **BUY**

Sheepskin, Body Size, double length, approx. 600mm x 1850mm. Soft, gentle support and maximum comfort. Promotes constant airflow and regulation of body temperature through absorption of excess moisture. Capable of absorbing up to 30% of its weight in water without feeling wet. Dry Clean only.

Width	Height
600	1850

Available to: [OT](#) [RN](#) [PH](#) [LM](#) [S](#) [CH](#) [OS](#) [PD](#)



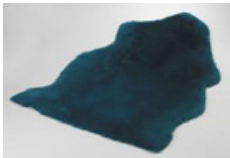
AB11

**Shear Comfort XD1900 Medical Overlay, Classic, 750x1250mm** **Code: ED1867** **BUY**

Shear Comfort Medical Overlays offer superior pressure, shear, heat, and moisture dissipation for enhanced comfort and effective pressure ulcer prevention and treatment. An advanced lamb's wool product, boasting 1900gsm (typical woven wool products have 300gsm – 500gsm) for extra density, extra comfort, and extra care. Can be washed repeatedly at temperatures up to 80°C for effective infection control. Available in a range of sizes.

Width	Height
750	1250

Available to: [OT](#) [RN](#) [PH](#) [LM](#) [S](#) [CH](#) [OS](#) [PD](#)



AB11

**Shear Comfort Natural Shape Sheepskin** **Code: ED1874** **BUY**

Natural shape Shear Comfort Medical Grade Sheepskin is a natural leather backed wool overlay, treated to be HITEMP UR, meaning it can be washed at up to 80°C repeatedly, and is urine and urea resistant.

Width	Height
630	920

Available to: [OT](#) [RN](#) [PH](#) [LM](#) [S](#) [CH](#) [OS](#) [PD](#)


**Shear Comfort Wrap Around Boots –  
Medium, Pair**

Code: ED0657

**BUY**

Wrap Around Wool Boots offer full foot protection for use in and outdoors with a low profile rubber sole. Hook and loop strapping on the heel and top of the foot allowing adjustment. Pair. Medium Size. Also available in Small, Large and Extra Large

AB11

Available to: [OT](#) [RN](#) [PH](#) [LM](#) [S](#) [CH](#) [OS](#) [PD](#)
**Shear Comfort Tall Slipper Boot,  
One Size Fits All, Pair**

Code: ED0642

**BUY**

Tall Slipper Wool Boots with open toes are designed to protect the entire lower limb. For use indoors, in bed or in an inclined chair. Generous hook and loop fastenings along the entire boot for better fit and easy adjustment. Can be used in conjunction with compression bandages or stockings. Pair. One size fits most.

AB11

Available to: [OT](#) [RN](#) [PH](#) [LM](#) [S](#) [CH](#) [OS](#) [PD](#)
**Shear Comfort Heel Protectors,  
Pair, Medium**

Code: ED5483

**BUY**

Thick wool heel protectors provide protection for the at risk heel and ankle area. Medium – Base Length 28cm. Pair. Also available in Small and Large.

AB11

Available to: [OT](#) [RN](#) [PH](#) [LM](#) [S](#) [CH](#) [OS](#) [PD](#)
**Shear Comfort Elbow Protector, One Size**

Code: ED0648

**BUY**

Elbow Protector redistributes pressure and eases blood flow over the bony joint, encouraging skin maintenance and repair over this problem area. One Size fits most.

AB11

Available to: [OT](#) [RN](#) [PH](#) [LM](#) [S](#) [CH](#) [OS](#) [PD](#)

**Shear Comfort Pressure Care Assist****Code: ED0650****BUY**

Shear Comfort Pressure Care Assist fits securely to a single bed to provide targeted relief for areas such as the heels and sacrum. Dimensions: 300x700mm.

Width	Depth
300	700

AB11

Available to: [OT](#) [RN](#) [PH](#) [LM](#) [S](#) [CH](#) [OS](#) [PD](#)**Heel/Foot & Elbow Pillow****Code: 31-559****BUY**

Silicon fibre foot pillow which relieves foot, heel and ankle pressure. One size fits all with Hook and Loop Closures.

Width	Height	Depth
100	140	30

AB11

Available to: [OT](#) [RN](#) [PH](#) [LM](#) [S](#) [CH](#) [OS](#) [PD](#)**AB12 – Monkey Bar / Self-Lifting Stand****Self Help Pole Free Standing****Code: BEA013100****HIRE**

The free-standing gooseneck is fabricated from heavy tubular steel section and is epoxy powder coated. Chain link adjustment gives a handle height variation of approximately 500mm.

AB12

Available to: [OT](#) [RN](#) [PH](#) [LM](#) [S](#) [CH](#) [OS](#)

## AB13 – Table – Over Bed



### Over Bed Table – Quick Adjust handle

Code: ED5131

BUY

This lightweight, heavy duty table is ideal for use in the bedroom or lounge. This powder coated steel frame has a sturdy base with four lockable castors for easy maneuverability. Quick adjust handle – spring loaded height adjustable. Table height 630mm – 1030mm & table depth 400mm

Width	Height	Depth
800	630	510

AB13

Available to: OT RN PH LM S CH OS

### Over Bed Table – "U" Base, Tilt Top, Adjustable Height, Spring Assisted

Code: E361US

BUY

Beige frame and laminate top. Powder coated mild steel frame with laminated particle board/craft wood tabletop. Fitted with castors. Degree of Tilt: 45 degrees in both directions. Height: Adjustable 710mm – 1100mm. Base Area: 455mm (w) x 740mm (l). Table Top Area: 400mm (w) x 700mm (l).

Width	Height	Depth
740	710	455

AB13

Available to: OT RN PH LM S CH OS

### Overchair Table Four Post

Code: BEA015400

BUY

Four post model suitable for over chairs only to provide better stability. Available in woodgrain top and brown epoxy coated frame with an adjustable height and angle table. Adjustable Height 650-1000mm

Width	Height	Depth
750	650	440

AB13

Available to: OT RN PH LM S CH OS

AB14 – Pressure Care Mattress



**Pressure Care Mattress –  
Layered memory foam – Single**

**Code: ENPSMP**

**BUY**

Premium Pressure Sensitive Mattress. 4 Comfort Layers for maximum comfort. Incorporates full length overlay of Visco Lux. Side formers built in with a hinging profile for adjustable bed use. Top fabric is PU 2 way stretch. Covering is fully welded seams incorporating a 4 sided zipper. Also available in ENPSMPKS King Single and ENPSMPQ Queen size.

Width	Height	Depth
860	160	1930

AB14

Available to:



**Memory Foam Overlay, Single 50mm**

**Code: 976B**

**BUY**

Soft feel Viscoflex memory foam overlay – 50mm thickness. Memory foam contours to the body shape, reducing pressure on body points. Single 910 x 1880 x 50mm. Also available in Double and Queen sizes.

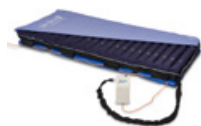
Width	Height	Depth
910	1880	50

AB14

Available to:





**Slimline 3 Alternating Mattress Overlay****Code: PTAM0010****BUY**

Alternating Mattress Overlay for Low to Medium Risk Pressure Care. Height 90mm, multi-stretch cover, pump with adjustable settings. Weight Capacity: 120kg

Width	Height	Depth
885	90	2020

AB14

Available to:

**Invacare Softform Premier Active 2 Mattress****Code: SPAM2-197/88****HIRE**

The Softform Premier Active 2 features an alternating air insert beneath the castellated foam surface of the Softform Premier mattress. In static mode, the mattress retains its properties as a high risk static surface, but should a patient require "stepping up" to a dynamic surface, then a pump can be easily fitted to the air insert, transforming the mattress into an alternating surface. There is no requirement to move the patient, thereby minimising any discomfort. Dimensions: 880 x 1970 x 152 (pump sold separately). Maximum user weight: 247kg

Width	Height	Depth
880	152	1970

AB14

Available to:

**Premium 8 Alternating Pressure Mattress****Code: PTAM0050****HIRE**

Alternating Pressure Mattress – full mattress replacement for Medium to High Risk Pressure Care. Height 215mm, multi-stretch cover, digital pump with advanced safety features and adjustable settings. Weight Capacity: 180kg. Also available PTAM0030 Premium 5 Overlay with 115mm height and PTAM0081 Premium 10 King Single with 280mm height.

Width	Height	Depth
885	230	2020

AB14

Available to:



**Easy Flo 4000 Pressure Mattress****Code: EFM4****HIRE**

The Easy Flo 4000 is a high risk mattress and pump replacement system with cell on cell technology consisting of 20 static cells as the base mattress, and 17 alternating cells with 3 static cells at the head / pillow end. All cell heights are 8" and are made from full PU. Featuring a digital pump with an adjustable cycle time of 10-15-20 minutes, it comes standard with a low pressure and power failure audible alarm, as well as a quick release hose and air line connection. Also available EFM3 Mattress Overlay 900 x 2000 x 127mm and EFM6 Bariatric Mattress Replacement 1067 x 2030 x 254mm.

Width	Height	Depth
900	2030	203

AB14

Available to:



## AB16 – Replacement Parts and/or Repairs for AB items

**Pump for Invacare Softform Premier Active 2 Mattress****Code: 1554777****BUY**

The digital pump transforms the Softform Premier Active 2 into an alternating surface with the air cells alternating on a ten minute cycle.

AB16

Available to:



## AB17 – Heel Elevators for Pressure Care

**Leg Relaxer with Quilted Slip****Code: BEP056200****BUY**

Reduce lower back pain, varicose veins and poor circulation with this adjustable leg wedge pillow, Leg Relaxer with Quilted Slip. Adjustable, and contoured for superb comfort. Also available BEP056250 Leg Relaxer with Waterproof Slip.

Width	Height	Depth
445	182	712

AB17

Available to:



## AC01 – Chairs – Low/High Back



### BC1 High Back Chair

Code: CHP196500

[BUY](#)

Tubular frame is powder coated steel with height adjustable telescopic legs. The backrest and seat are contoured, foam padded and supported on a one piece plastic shell. The full length armrests consist of padded foam, and extends to the end of the armrest frame. Width: 730mm, Seat width: 535mm, Seat height: 380mm to 530mm.

AC01

Available to: [OT](#) [RN](#) [PH](#) [LM](#) [S](#) [CH](#) [OS](#)

### Hilite High Back Chair, Adjustable Back

Code: KF58202

[BUY](#)

Lightweight and sturdy this chair is designed for comfort and function. Contoured backrest to provide lumbar and neck support. Seat height, depth and angle are adjustable. Backrest height: 700mm, Seat width: 490mm, Adjustable seat depth: 480mm to 520mm, Adjustable seat height: 430mm to 580mm, Maximum user weight: 160kg.

AC01

Available to: [OT](#) [RN](#) [PH](#) [LM](#) [S](#) [CH](#) [OS](#)

### Atlantic High Back Chair

Code: E916

[BUY](#)

Built-in lumbar, the high backrest provides good neck support. Castors on rear legs for ease of moving. Width between armrests 520mm, Adjustable Seat Depth 395mm – 510mm and Height 400mm – 550mm (25mm increments), Capacity 300Kg.

AC01

Available to: [OT](#) [RN](#) [PH](#) [LM](#) [S](#) [CH](#) [OS](#)


**Revolution Utility Swivel-Slide Chair –  
Height Adjustable**

Code: REVOLUTION-HA

**BUY**

Swivel-slide seat allows easy user access to the chair and to a table without moving the chair legs. Seat rotates to face table then slides forward to position the person closer to the table, without the need for moving the chair. Height adjustable. Seat Height: 450-530mm, seat width: 450mm, seat depth: 485mm, Weight capacity: 120kg. Also available REVOLUTION non- height adjustable model.

AC01

Available to: OT RN PH LM S CH OS**Hayman Mid-Backed Chair**

Code: E917

**BUY**

Powder coated round steel tube frame, shaped backrest gives comfortable lumbar support and a well padded seat that aids easy rising. Adjustable Height 430mm – 580mm (25mm Increments), Seat Capacity 300Kg.

AC01

Available to: OT RN PH LM S CH OS**Kingston Low Backed Chair**

Code: EA914

**BUY**

Powder coated mild steel frame, Vinyl covered padded seat, backrest and armrests. Standard, Adjustable Height 440mm to 565mm, Back rest 370mm, Armrest Width 70mm, Weight 10Kg, Capacity 300Kg.

AC01

Available to: OT RN PH LM S CH OS

## AC03 – Stool – Height adjustable



AC03

### Kitchen Stool – with arms

Code: CHP213500

BUY

For use where a standard chair is not suitable or the user has difficulty standing or sitting. Adjustable seat height and angle. Backrest height: 400mm, Seat Width: 360mm, Adjustable Seat Height: 520mm to 640mm. Maximum user weight: 110kg.

Available to: [OT](#) [RN](#) [PH](#) [LM](#) [S](#) [CH](#) [OS](#)

## AC04 – Chair – Platform / Blocks



AC04

### Chair Raising Platform – Timber

Code: E920

BUY

Wooden chair raising platform to increase the seat height of existing chairs. Please specify width, length and height required.

Available to: [OT](#) [RN](#) [PH](#) [LM](#) [S](#) [CH](#) [OS](#)

AC04

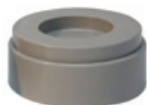
### Chair Raising Block – Plastic Elephant Feet 100mm – Set of 4

Code: BR100/4AC

BUY

100mm high tough plastic brick for raising chairs or beds for easier access. Set of 4.

Width	Height
195	100

Available to: [OT](#) [RN](#) [PH](#) [LM](#) [S](#) [CH](#) [OS](#)

AC04

### Chair Raising Block – Plastic Elephant Feet 40mm – Set of 4

Code: BR40/4AC

BUY

40mm high tough plastic brick for raising chairs or beds for easier access. Set of 4. Can also be stacked on top of 10mm block to raise by 140mm.

Width	Height
125	40

Available to: [OT](#) [RN](#) [PH](#) [LM](#) [S](#) [CH](#) [OS](#)

## AC06 – Chair – Electrically Operated Lift and Recline Chair



AC06

### Topform Recliner Chair – Medium, Single Motor

Code: TFMED1

HIRE

Topform Recliner Chair – Medium, Single Motor – Suit height of approx 5ft 8", Hand held control on extendable cord with two soft touch buttons on control to raise and lower chair. Topform Recliner chairs available in a range of sizes in single and dual motor design, and manual lever action.

Available to: OT PH LM S

AC06

### Pride C6 Electric Lift and Recline Chair

Code: C6

HIRE

C6 Electric Lift & Recline, Dual Motor, Independent Recline And Footrest, 3 Position, Medium To Large. Pride Lift & Recline chairs available in a range of sizes in single and dual motor design.

Available to: OT PH LM S

AC06

### Alaska 1 Motor Medium Electric Lift and Recline Chair

Code: LAM1

HIRE

Alaska Electric Lift and Recline Chair Single Motor, Fabric, Medium for 5'4 to 5'10. Available in a range of sizes in single and dual motor design, and manual lever action.

Available to: OT PH LM S

AC06

### Luxor Platinum Medium 1 Motor Electric Lift and Recline Chair

Code: TOP-LUXP01/MEDIUM

HIRE

Topform Luxor Platinum chair specially designed to allow the memory foam seat cushion to be substituted with a Roho or other pressure care cushion. Available in a range of sizes in single and dual motor design.

Available to: OT PH LM S

## AC07 – Footstool – Height Adjustable



### Footstool – Fixed Height

Code: X925

BUY

Fixed Height footstool with back non-slip, ribbed rubber surface. Height: 230mm, Width: 360mm, Length: 280mm.

Width	Height	Depth
360	280	230

AC07

Available to: OT RN PH LM S CH OS

### Adjustable Leg Rest Vanilla/Champagne

Code: CHP210700

BUY

Padded Footrest to suit Hilite Chair, Vanilla/Champagne. The Adjustable Leg Rest has height adjustment from 400mm to 550mm, naturally sits on a 10 degree angle which can be adjusted and has a top size of 500mm x 400mm.

Width	Height	Depth
400	500	400

AC07

Available to: OT RN PH LM S CH OS

### ETAC Stapel Stool, Footstool or Stepping Stool

Code: ED81204002

BUY

ETAC Stapel Stool, Footstool or Stepping Stool suitable for use in bathroom or toilet. Low profile 179mm height with plastic top that can be removed for cleaning. Standing surface dimensions Width: 430mm Depth: 380mm Weight Capacity: 130kg.

Width	Height	Depth
430	179	380

AC07

Available to: OT RN PH LM S CH OS

## AC08 – Chair – Fallout / Water



AC08

Air Comfort Princess Bed Boston

Code: AC59002

HIRE

Pressure Relief Princess Bed Boston. Total surface air pressure system. Adjustable seat, back and leg rest. Detachable/adjustable head rest. Suit patients from 142cm (4ft 8in) to 162 cm (5ft 7 in). Exterior: Back width – 740mm, Seat width – 630mm, Sitting length – 1000mm. Interior: Back width – 500mm, Seat width – 420mm, Back height – 700mm. Various sizes and models available. Meal tray and footplates shown are optional extras.

Available to: OT RN PH LM S CH OS

## AC09 – Chair – Manual Recliner



AC09

Alaska Manual Recliner Small, Lever Action

Code: LASM

HIRE

Description: Manual Recliner, Lever Action, Alaska, Fabric, Small for 5'0 to 5'3. Seat Width: 480mm, seat depth: 520mm, seat height: 500mm, seat to top of back: 690mm, overall width: 800mm, overall height: 1080mm.

Available to: OT RN PH LM S CH OS

AC09

Topform Manual Recliner – Lever – Medium

Code: TFASH RECFMED

HIRE

Description: A timber framed, manual recliner chair with a lever action recline mechanism in a range of fabrics. Available in Mini, Medium, Tall and Maxi sizes.

Available to: OT RN PH LM S CH OS



# AD04 – Urinal (male and female)



## Urinal – Male, Non Spill

Code: 3140

BUY

Translucent bottle with graduated measurement markings, ergonomic handle to hand on bed rail, walker or wheelchair. Will not leak or spill irrespective of positioning. Capacity 700ml.

Width	Height	Depth
110	320	75

AD04

Available to:



## Urinal – Female adaptor for male non-spill urinal

Code: 3141

BUY

Female adaptor to fit 3140 Non Spill Urinal.

AD04

Available to:



## Urinal – Male Standard with Lid

Code: V10558T

BUY

Translucent bottle with lid and graduated measurement markings up to 1000ml.

Width	Height	Depth
250	100	90

AD04

Available to:



## Urinal – Female Standard

Code: 2630

BUY

Female standard urinal. Opaque bottle with 1000ml capacity.

Width	Height	Depth
155	320	85

AD04

Available to:



## AE01 – Back Supports



### Back EZE Mark 2

Code: PTB532010

BUY

Lightweight, polyurethane moulded foam back support cushion which curves vertically and horizontally. Navy blue stretch fabric cover.

Width	Height	Depth
350	330	110

AE01

Available to:



### Koala Komfort Inflatable Lumbar Cushion

Code: KOALA

BUY

Koala Komfort Inflatable Lumbar Cushion. Mid and lower back support with internal rubber bladder to allow adjustment to the curvature. Moulded urethane foam with zip off stretch nylon cover. Colour: Black.

Width	Height
400	280

AE01

Available to:



### Obus Forme Back Support – Lowback

Code: OBUSLB

BUY

S-shaped frame conforms to the natural S-curve of the spine to guide the back into correct alignment and promotes proper sitting posture. Lightweight polycarbonate frame with polyurethane foam. Removable and adjustable lumbar pad for customisable back support. Also available OBUSHB High Back and OBUSWB – Wide Back.

Width	Height	Depth
450	530	75

AE01

Available to:





### Obus Forme Seat Support

Code: OBUSS

BUY

Designed to relieve fatigue from the buttocks and sacrum, to the lumbar and thoracic areas. Can be used on its own or in conjunction with any OBUS Forme backrest support.

Width	Height	Depth
450	400	60

AE01

Available to: OT RN PH LM S CH OS


### Therapod High Back Support

Code: TPHBS

BUY

Unique shell shaped structure with adjustable straps for full back support. Adjustment system allows back rest angle to be set as required. Soft upholstery fabric. Width: 500mm, Height: 800mm, Depth: 100mm. Also available in Standard size and Coccyx Seat.

Width	Height	Depth
500	800	100

AE01

Available to: OT RN PH LM S CH OS


### Bassett Lumbar Support

Code: EA960

BUY

Contoured backrest made of a tubular steel frame and nylon mesh. Also available EA961 Heavy Duty and EA960C Optional Polar Fleece Cover.

Width	Height	Depth
380	440	110

AE01

Available to: OT RN PH LM S CH OS


### Lumbar Roll, "D" Shape

Code: EA2149D

BUY

D-Shaped Lumbar Roll, Firmer density, Provides good lower back support and its flat back sits comfortably against a chair. Lumbar Rolls available in various shapes.

Width	Height	Depth
310	140	90

AE01

Available to: OT RN PH LM S CH OS

## AE02 – Bed Wedges and Supports



### Leg Relaxer Bed Wedge With Waterproof Cover

Code: EA2132W

[BUY](#)

Reduce lower back pain, varicose veins and poor circulation with this adjustable leg wedge pillow, Leg Relaxer with Waterproof Cover. Adjustable, and contoured for superb comfort. Also available EA2132 Leg Relaxer with Quilted Cover.

Width	Height	Depth
445	712	182

AE02

Available to:



### Contoured Bed Wedge with Quilted Cover

Code: EA2131

[BUY](#)

Quilted poly/cotton cover – internal foam wedge which can be removed to lower the angle from 15° to approximately 10°. Also available EA2131W Contoured Bed Wedge with Waterproof Cover.

Width	Height	Depth
680	750	250

AE02

Available to:



## AE04 – Pressure Care Cushion



**Roho Cushion Quadtro Select High Profile** Code: PTC588500 **BUY**

A premium wheelchair cushion offering superior skin protection and uniquely customised fit. Self-adjusts with every movement enhancing blood flow and supporting posture. 10 x 9 cell – 460 x 410 x 100mm. Available in various sizes in High and Low Profile.

Width	Height	Depth
460	100	410

AE04

Available to: [OT](#) [RN](#) [PH](#) [S](#) [CH](#) [OS](#)



**Roho Cushion Contour Select 460 x 410mm** Code: PTC593800 **BUY**

Contoured cushion for optimum pelvis positioning that allows on-demand adjustment when seated. Interconnected cells designed to conform to individual body shape. 10 x 9 cell – 460 x 410 x 90mm. Available in various sizes.

Width	Height	Depth
460	90	410

AE04

Available to: [OT](#) [RN](#) [PH](#) [S](#) [CH](#) [OS](#)



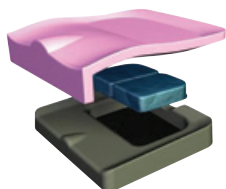
**Easy Flo 6000 Premium Seat Cushion** Code: EFM7 **BUY**

Easy Flo 6000 Premium Seat Cushion offering static and alternating control with digital pump. Operates from mains power and battery creating broad portability. Can be used in conjunction with wheelchairs, power chairs, scooter and static seating.

Width	Depth
400	420

AE04

Available to: [OT](#) [RN](#) [PH](#) [S](#) [CH](#) [OS](#)


**Pride Synergy Spectrum Gel Cushion**  
**410 x 410mm**

Code: SMB1034

BUY

Contoured high density memory foam base with gel packs, solid seat pan and a bottoming out pad. Suitable for medium to high risk users. Includes water resistant inner cover and 4 way stretch incontinence cover with non-slip base. 410 x 410 x 76mm. Available in a range of sizes.

Width	Height	Depth
410	76	410

AE04

Available to:


**Jay Basic Cushion 410 x 410mm**

Code: PTC567400

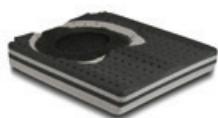
BUY

A soft, mildly contoured single density foam cushion suitable for sling based wheelchairs. The bevelled bottom provides a more level sitting surface for improved pelvic alignment over time. Designed for comfort or for users with a very low risk of pressure injury. Includes moisture resistant cover. 410 x 410 x 50mm. Available in a range of sizes.

Width	Height	Depth
410	50	410

AE04

Available to:


**Jay Cushion Lite 410 x 410mm**

Code: PTC571911

BUY

Extremely lightweight foam cushion providing superior pressure distribution, heat and moisture dissipation and optimal stability. Foam base is mildly contoured to encourage proper positioning. 410 x 410 x 85mm. Available in a range of sizes.

Width	Height	Depth
410	85	410

AE04

Available to:



## AH01 – Crockery and Cutlery – Adaptive



AH01

### ETAC Light Knife Thin

Code: ED80401001

BUY

Thin Handle cutlery range has long thin handles to allow a comfortable grip in the hollow between the thumb and index finger. Reduces need to lift the arm as high. Available in ED80401001 Knife, ED80401003 Fork, ED80401005 Spoon, ED80401007 Dessert Spoon.

#### Depth

220

Available to:



AH01

### ETAC Light Knife Thick

Code: ED80402006

BUY

Thick Handle cutlery range has oval handles to sit securely in the hand allowing various grips. Knife handle has a slope for the thumb to rest on and a sharp blade to make cutting easier. The spoon has a slightly longer and thinner handle to make a grip in the hollow between the thumb and index finger comfortable. Available in ED80402006 Knife, ED80402002 Fork, ED80402004 Spoon, ED80402007 Dessert Spoon.

#### Depth

210

Available to:



AH01

### ETAC Light Combispoon Knife/Spoon

Code: ED80403001

BUY

Designed for one handed use. Cutting edge is on the underside of the blade to prevent injury to corners of the mouth. Suitable for left or right handed use.

#### Depth

200

Available to:





AH01

**ETAC Light Combifork Knife/Fork for RIGHT Hand** Code: ED80403002

**BUY**

Knife/Fork combination for one handed use. Cutting edge is on the underside of blade to prevent injury to corners of the mouth. Available in ED80403002 Right hand, ED80403002 Left hand.

**Depth**

180

Available to:



AH01

**ETAC Light Spoon Angled for RIGHT Hand** Code: ED80403201

**BUY**

Lightweight angled spoons are designed for people with impaired arm and hand mobility. The handles are oval shaped to sit in the hand and allow a secure grip when eating. Available in ED80403201 Right hand, ED80403202 Left hand.

**Depth**

190

Available to:



AH01

**ETAC Relieve Angled Knife**

Code: ED80402101

**BUY**

Ergonomic knife with angled handle for stable grip with shorter blade for use when eating. Handle: 100mm, Blade: 115mm. Also available ED80402102 Small – Handle: 90mm, Blade: 85mm.

Available to:







AH01

**ETAC Tasty Glass****Code: ED80404001****BUY**

Polycarbonate Glass has a thick neck and stable foot. The lightness of the glass plus the ability of the bowl to rest against the top of the hand when lifting makes it easy to use. Lightweight with a functional and discreet design to adapt to a standard laid table.

Available to:



AH01

**ETAC Plate Tasty with Push Against Edge****Code: ED80404005****BUY**

Heat Resistant Melamine Plate has a raised edge to facilitate picking up food with one hand only. The underside has a rubber strip attached so that the plate is positioned securely. Functional and discreet design to adapt to a standard laid table.

Available to:

**AH07 – Jar Opener**

AH07

**Can Pull****Code: DLK275610****BUY**

The Can Pull is a durable device especially designed for opening ring pull cans. Extremely easy to use, just hook the end under the ring, fold forwards and then roll back. Suitable for users either with arthritis or with a weak grip.

Available to:



AH07

**Jarkey Jar Opener****Code: PAT-AA5012****BUY**

JarKey plastic opener makes it easier to open jar lids. Gently lever the Jarkey against the rim of the lid to release the vacuum inside the jar. Suitable for lids with diameters up to 100mm. Various colours.

**Depth**

140

Available to:





AH07

**Bottle Opener and Knob Turner****Code: DLK275560****BUY**

Flexible rubber moulding for an easy, firm grip on small tops eg. drink bottles or medicine containers. Excellent for turning knobs. Suitable for tops up to 35mm (1 1/2") diameter. Weight 85g.

Available to:     

AH07

**Strongboy Jar and Bottle Opener****Code: DLK275550****BUY**

Strongboy Jar and Bottle Opener The flexible stainless steel band is fitted around a lid, and then clamped tight using the screw at the end of the handle. The handle can then be used as a lever. Suitable for tops 20-110mm (3/4 – 4 1/2") diameter. Weight 88g.

Available to:     

AH07

**Twister Jar Opener****Code: V10905****BUY**

Moulded rubber to assist with opening of jars.

Available to:     **AH08 – Key Turner**

AH08

**Two Key Turner****Code: DLG271320****BUY**

Assists with turning of keys due to curved built up handle for comfortable grip and increased leverage. Keys fold into handle when not in use.

Available to:     

## AH09 – Non – Slip Table Mat



### Non Slip Matting

Code: Miracle

[BUY](#)

Open mesh matting to prevent slipping of objects. Sold per metre.

AH09

Available to:



### Non Slip Table Mat – Dycem Anchorpad Rectangular Large

Code: DLG271400

[BUY](#)

Dycem Anchorpad non slip table mat. Colour: Blue, Width: 250mm, Length: 350mm.

Width	Depth
250	350

AH09

Available to:



### Non Slip Table Mat – Dycem Reel White 2m x 20cm

Code: DLG271440

[BUY](#)

Dycem Reel non slip matting, can be cut to various shapes and sizes to prevent unwanted movement or spillages. Colour: White, Width: 200mm, Length 2000mm.

Width	Depth
200	2000

AH09

Available to:



## AH11 – Reaching Appliances – Long Handled Reaching



### Euro Style Reacher – 595mm

Code: V10204/60

BUY

Lightweight aluminium reacher with comfortable trigger handle and automatic locking mechanism. Especially suited to people with minimal grip strength and poor endurance. Length: 595mm. Available in a range of sizes.

#### Width

595

AH11

Available to:



### Easireach II – Standard 530mm

Code: DLR279050

BUY

Lightweight aluminium reacher with trigger operated ergonomic handle. Highly visible 50mm jaw opening. Includes magnet tip, dressing hook and attachment clip. Length: 530mm. Available in standard and folding versions in a range of sizes.

#### Width

530

AH11

Available to:



### Pick Up Reacher – Standard

Code: DLR279150

BUY

Ideal for people with weakened fingers or hands. Lightweight reacher features a unique trigger design that allows for conventional trigger handle operation with whole hand or short trigger ideal for stiff, arthritic fingers. Jaw rotates 360 degrees and opens 300mm. Magnet and removable attachment clip. Length: 600mm. Available in a range of sizes.

#### Width

600

AH11

Available to:



## AH12 – Scissors – Spring Loaded Adaptive



AH12

### Scissors – Spring Loaded Adaptive – Easigrip Round 45mm

Code: DLG271330

BUY

Easigrip scissors with round blade 45mm. Scissors spring back open when pressure is released. Also available DLG271340 pointed blade 45mm, DLG271350 pointed blade 75mm.

Available to: OT RN PH LM S

## AH13 – Tap Turner (see also AL00 Lever Taps)



AH13

### Etac Uni Universal Turner

Code: ED80503003

BUY

Comfortable angled handle with hexagonal pegs to assist with gripping and turning various knobs including taps, doors, washing machine and oven.

Available to: OT RN PH LM S

## AH14 – Traymobile – Height Adjustable



AC14

### Trolley Walker with Handbrakes

Code: HLC-109

BUY

Adjustable Height Trolley Walker with loop lockable handbrakes, clip on plastic trays, cream painted steel frame. Height: 755 – 905mm.

Width	Height	Depth
585	790	560

Available to: OT RN PH LM S

AC14

### Kitchen Trolley Adjustable Height

Code: DLG272060

BUY

Kitchen trolley with plastic trays. Height: 790 – 915mm.

Width	Height	Depth
450	790	500

Available to: OT RN PH LM S



AC14

**Traymobile – Adjustable Height****Code: E601T****BUY**

Grey powder coated steel frame with white plastic removable trays, four castors, two locking. Height: 720 – 845mm. Shelf Area: 300 x 400mm. Available with rear glides or skis if required.

Width	Height	Depth
480	720	540

Available to:

**AH15 – Vegetable Board (kitchen cutting board) – Modified**

AH15

**ETAC Preparation Board Fix and Cut****Code: ED80501004****BUY**

Allows for single handed or double grip food preparation by keeping items in place. Jaws can hold a bowl, grater or food item. Detachable spiked plate to secure smaller items whilst cutting. Friction feet or suction feet for added security.

Available to:



AH15

**ETAC Cutting Aid Cut****Code: ED80501005****BUY**

Simple cutting aid allowing for one handed or double grip cutting of bread. The knife fits in the guides making it possible to cut safe and straight.

Available to:

**AH17 – Eating/Kitchen/Household Adaptive Appliances – Miscellaneous Items**

AH17

**ETAC Relieve Kitchen Knife with Serrated Blade****Code: ED80501001****BUY**

Allows cutting with a straight wrist to utilize the strength in the hand and arm and relieve strain on fingers, hands and wrists. Serrated Blade, 230mm long.

**Depth**

230

Available to:





AH17

**Long Handled Dust Pan and Broom**

**Code: DLG271500**

**BUY**

Long handled dust pan and broom reduces the need to bend whilst cleaning up.

**Height**

970

Available to:



AH17

**Cordless Kettle Tipper**

**Code: DLK276610**

**BUY**

Holds kettle securely in place to allow for easy and safe pouring for users with reduced hand, wrist or arm strength.

Available to:



## AH19 – Shoe horn – Long handled



AH19

**Shoehorn 16" (410mm) – Plastic**

**Code: V10921/16**

**BUY**

Shoe Horn, Long Handle – 410mm Length, Plastic. Also available in 595mm length.

**Height**

410

Available to:



## AL04 – Lever Taps



**Wall Mounted Lever Tap Set, Quarter Turn, Pair** Code: LTW

**BUY**

Wall Mounted Lever Tap Set, Suitable for shower and bath.  
(Spout not included)

AL04

Available to: OT S



**Basin Mounted Lever Tap Set, Quarter Turn, Pair**

Code: LTB

**BUY**

Basin Mounted Lever Tap Set. Suitable for basin and sink.  
(Spout not included)

AL04

Available to: OT S



**Bib Assembly Lever Tap Set, Quarter Turn, Pair** Code: LTBB

**BUY**

Bib Assembly Lever Tap Set.

AL04

Available to: OT S



## AL06 – Non Slip surfacing (including non slip strips)



AL06

**Non Slip Tape for Interior Surfaces** Code: EA970B/V – 25mm Black, BUY  
EA970W/V – 25mm White,  
EA970B/5V – 50mm Black,  
EA970W/5V – 50mm White

Non Slip Tape suitable for use on interior surfaces. Available in Black and White, 25mm and 50mm width. Length: 1 metre.

Available to: [OT](#) [RN](#) [PH](#) [S](#)



AL06

**High Visibility Non Slip Strips** Code: HVSTRIP BUY

Non Slip Tape suitable for enhancing visibility of step edges.  
Length: 1 metre.

Available to: [OT](#) [RN](#) [PH](#) [S](#)



AL06

**Non Slip Tile Treatment** Code: NST BUY

Non Slip Tile Etching Treatment for internal wet areas. Measured per square metre. Also available: NSP-CLEAR, Clear Non-slip paint.

Available to: [OT](#) [RN](#) [PH](#) [S](#)



AL06

**High Visibility Paint** Code: HVP BUY

High Visibility Paint to enhance visibility of step edges. Per metre.

Available to: [OT](#) [RN](#) [PH](#) [S](#)

## AL09 – Rails (internal and external)



AL09

**32mm Grab Rail Almond Ivory or White**

Code: GRO300, GRO600, GRO450, GRO600, GRO900, GRO1200, GRO1500

BUY

Textured finish, can be cut to size or joined to make multiple configurations. Slim line, normal and corner ends.  
Available in mm lengths: 300, 450, 600, 900, 1200, 1500.

Available to:  





AL09

**Firm Grip Chrome Plated Rail, exposed fittings**

Code: 1482 - 300mm x 32mm  
1483 - 450mm x 32mm  
1484 - 600mm x 32mm  
1485 - 750mm x 32mm  
1486 - 900mm x 32mm  
1458 - 300mm x 25mm  
1462 - 450mm x 25mm  
1464 - 600mm x 25mm  
1447 - 750mm x 25mm  
1448 - 900mm x 25mm

BUY

Firm Grip (Anti-slip) Chrome Plated Rail with Exposed Fixings. Available in Diameter: 32mm (standard) and 25mm (for smaller hands).

Available to:  



AL09

**Stainless Steel Satin Finish Rail, exposed fittings**

Code: 1516 - 300mm x 32mm  
1520 - 450mm x 32mm  
1522 - 600mm x 32mm  
3768 - 750mm x 32mm  
1524 - 900mm x 32mm  
1504 - 300mm x 25mm  
1508 - 450mm x 25mm  
1510 - 600mm x 25mm  
1512 - 900mm x 25mm

BUY

Stainless Steel Satin Finish Rail with Exposed Fixings. Available in Diameter: 32mm (standard) and 25mm (for smaller hands).

Available to:  



### Single Hole Flange Almond Ivory Rail

Code: 3780 - 300mm x 25mm  
3781 - 450mm x 25mm  
3782 - 600mm x 25mm

BUY

25mm grab rail suitable for architrave of door, slimline ends with one fixing point. Also available in White, Chrome and Firm Grip.

AL09

Available to:



### Modular System, Firm Grip Chrome Plated Brass, 32mm

Code: 3913 - 1mtr tube  
3914 - 2mtr tube  
3925 - 3mtr tube  
3908 - Concealed flange ends  
3916 - 90° horizontal corner elbow  
3922 - Hand rail support

BUY

Firm Grip Chrome Plated Brass length of rail suitable for multiple configurations using matching componetry. Available in lengths: 1m, 2m and 3m.

AL09

Available to:



### Modular System, White Ripple Finish Aluminium, 32mm

Code: 3934W/R - 1mtr tube  
3935W/R - 2mtr tube  
3915W - Concealed flange ends  
3910W - 90° horizontal corner elbow  
3922W - Hand rail support

BUY

White Ripple Finish length of rail suitable for multiple configurations using matching componetry. Available in lengths: 1m, 2m and 3m.

AL09

Available to:



### Modular System Almond Ivory Ripple Finish Aluminium, 32mm

Code: 3934AI/R - 1mtr tube  
3935AI/R - 2mtr tube  
3908AI - Concealed flange ends  
3910AI - 90° horizontal corner elbow  
3922AI - Hand rail support

BUY

Almond Ivory Ripple Finish length of rail suitable for multiple configurations using matching componetry. Available in lengths: 1m, 2m and 3m.

AL09

Available to:







<b>32mm Fixed Length Grab Rail</b> Chrome Plated (CP) Stainless Steel (SS)	<b>Code:</b> GR-32-300-CP-E (300mm CP)	<b>BUY</b>
	GR-32-450-CP-E (450mm CP)	
	GR-32-600-CP-E (600mm CP)	
	GR-32-750-CP-E (750mm CP)	
	GR-32-900-CP-E (900mm CP)	
	GR-32-300-SS-E (300mm SS)	
	GR-32-450-SS-E (450mm SS)	
	GR-32-600-SS-E (600mm SS)	
	GR-32-750-SS-E (750mm SS)	
	GR-32-900-SS-E (900mm SS)	

32mm Fixed length rail with exposed flanges. Chrome Plated (CP) or Stainless Steel (SS). Available in mm lengths: 300, 450, 750, 900.

AL09



Available to:  

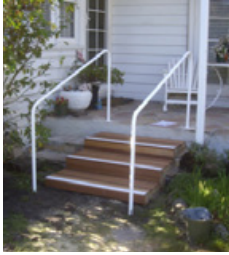


<b>32mm Custom Length Grab Rail</b> Stainless Steel (SS) White (PCW) Almond (PCA)	<b>Code:</b> MR-32-500-SS-C (500mm SS)	<b>BUY</b>
	MR-32-1000-SS-C (1000mmSS)	
	MR-32-500-PCW-C (500mm PCW)	
	MR-32-1000-PCW-C (1000mm PCW)	
	MR-32-500-PCA-C (500mm PCA)	
	MR-32-1000-PCA-C (1000mm PCA)	

32mm Custom Length rail can be customised to suit the specific application and ensure the rail is firmly secured using 2 points of fixing, which is not always feasible with fixed length. Almond (PCA), White (PCW) or Stainless Steel (SS). Available in lengths: 500mm, 1000mm.

AL09

Available to:  





**Banister Rail, Custom Made 35mm OD Galv Pipe, Painted** Code: BR2 (0000mm - 2000mm) BUY

BR25 (2001mm - 2500mm)  
BR3 (2501mm - 3000mm)  
BR35 (3001mm - 3500mm)  
BR4 (3501mm - 4000mm)  
BR45 (4001mm - 4500mm)  
BR5 (4500mm - 5000mm)  
BR55 (5001mm - 5500mm)  
BR6 (5501mm - 6000mm)

Banister Rail custom made according to specifications. Please provide diagram with dimensions. Also available: PCBR - Powder coating for Banister Rails.

AL09

Available to:  





**Wall Mounted Fold Down Stainless Steel Rail**

Code: 550

BUY

32mm Stainless Steel Wall Mounted U Shaped Grab Rail, Lift Up - Fold Down.

AL09

Available to:  

## AL11 – Ramps – Portable





**Ramp – Decpac EBL (Edge Barrier Limiter)** Code: DP900

BUY

Carbon fibre folding ramp with edge barriers for added security. Suitable for negotiating kerbs, access to trains, buses and buildings. Width: 750mm, Length: 900mm, Maximum Height Capacity: 225mm, Weight Capacity: 300kg, Unit Weight: 6kg. Available in 9 sizes for obstacles from 225 – 875mm in height.

Width	Depth
750	900

AL11



Available to:  

**Ramp – Senior 135 AUS****Code: DS135-  
F01L05N14-M000****BUY**

A simple concertina folding action portable ramp that can be deployed in seconds. Width: 7502mm, Length: 1350mm, Maximum Height Capacity 337mm, Weight Capacity: 300kg, Unit Weight 8.5kg. 10 sizes available to suit obstacles from 225 – 875mm in height.



Width	Depth
750	1350

AL11

Available to:  **AL14 – Step Modifications****Step Modification - timber, custom made****Code: SMOD****BUY**


Timber step modification for widening/increasing the depth of the step tread, or halving the height of a high step. Custom made to size, up to a maximum size of 1200mm x 1000mm. Includes non-slip paint if required. Also available: CSMOD - concrete step modification up to maximum size 1200mm x 1000mm. Recommendation is greater than 1 step will require DVA approval.

AL14

Available to:  **AL21 – Home Modifications****Timber Wedge Ramp****Code: WGE1, WGE2,  
WGE3****BUY**

Timber Wedge Ramp for access, custom made. WGE1 Up to 500 x 1000mm, WGE2 Up to 1000 x 1000mm, WGE3 Up to 800 x 1000mm. Please provide diagram with dimensions.

AL21

Available to:  **Rubber Wedge Ramp****Code: TR025****BUY**

Rubber Wedge Ramp for access. Dimensions: 1010mm X 200mm X 25mm. Also available TR050 - 1140mm x 400mm x 50mm.

AL21

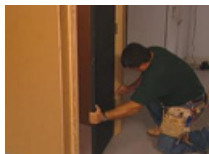
Available to:  



AL21

**Timber Threshold In-Fill****Code: INFILL****BUY**

Small timber infill to fill gaps in doorways with different flooring heights.

Available to: OT S

AL21

**Reswing/Rehinge/Remove Door****Code: FIT10****BUY**

Reswing/Rehinging, Removing Doors, No Structural Changes. Including shower screen door removal and adding safety hinges.

Available to: OT S

AL21

**Magnetic Door Catch****Code: MAG****BUY**

Magnetic Door Catch to hold door open allowing for easier access with walking aid. Also available: MAGP - post to attach catch to where there is no fixing point available.

Available to: OT S

AL21

**Ross Safety Hinges****Code: ROSS****BUY**

Allows a door to be opened outwards in an emergency situation. Also available: LIFT - lift off hinges allowing door to be lifted off in an emergency.

Available to: OT S

AL21

**Shower Base Insert****Code: SBI****BUY**

Shower Base Insert to raise the height of the shower floor. Up To 900 X 900mm, Made To Measure. Also available: SBIX for inserts over 900 x 900mm, SBIW Shower Access Wedge.

Available to: OT S



AL21

**Shower Curtain Rod****Code: FIT5****BUY**

Shower curtain rod for use with weighted shower curtain. Also required: FIT6 Ends for Shower Curtain Rod.

Available to:



AL21

**Weighted Shower  
Curtain**  
 1800mm or 2000mm  
 length

**Code: WSC1318 (1300x1800mm)**  
 WSC1818 (1800x1800mm)  
 WSC2018 (2000x1800mm)  
 WSC1320 (1300x2000mm)  
 WSC1820 (1800x2000mm)  
 WSC2020 (2000x2000mm)
**BUY**

Weighted Shower Curtain for use instead of shower screen doors.  
 1800mm or 2000mm lengths. Also available in widths up to 2600mm.

Available to:





## AM01 – Hoist/Personal lifting device (includes sling)



### Birdie Compact Electric Hoist 150kg

Code: BIRDIECOM

HIRE

Compact base and large castors enables easy manoeuvring through narrow doorways, around beds and in bathroom areas. 2 point quick attach spreader bar. Manual leg adjustment. Folds easily without the use of tools for transport and storage. Base Width: 550 – 890mm, Height Range: 530 – 1600mm, Depth: 1000mm, Weight Capacity: 150kg.

AM01

Available to:



### Invacare Birdie Lifter 170kg

Code:  
3000502.E3B00-0125

HIRE

Allows comfortable lift and transfer from bed, chair or floor. 2 point quick attach spreader bar. Electric leg adjustment. Folds without the use of tools for easy transport and storage. Base Width: 680 – 1040mm, Height Range: 470 – 1740mm, Depth: 1150mm, Weight Capacity: 170kg.

AM01

Available to:



### Roze Stand Up Lifter 200kg

Code: ROZE200KG

HIRE

Compact stand up lifter allows the patient to be transferred to or from a bed or chair. Lifts smoothly to a full standing position. Can be used for standing assistance or seating assistance. Base Width: 660 – 1050mm, Height range: 940 – 1610mm, Depth: 1120mm, Weight Capacity: 200kg.

AM01

Available to:



## AM02 – Sling for Hoist – additional



AM02

**Sling – General Purpose with  
Head Support, – Hygiene Mesh**

Code: 17358

BUY

General purpose hygiene mesh sling with head support. Enables easy removal of clothing or toilet transfers. Medium. Various sizes available.

Available to:



AM02

**Sling – General Purpose with  
Head Support – Fabric**

Code: 17067

BUY

General purpose fabric sling with head support. Fits easily to a patient in bed or in a chair. Suitable for lifting from the floor. Medium. Various sizes available.

Available to:



## AP03 – Crutches – Mobility Appliances



AP03

### Underarm Crutches

Code: ED2352

BUY

Lightweight aluminium underarm crutches with height adjustable handgrips and legs. Pair. Medium for user height: 1570 – 1780mm, Crutch height: 1130 – 1330mm, Weight Capacity: 110kg. Also available ED3618 Small, ED3601 Large.

#### Height

1130

Available to:



AP03

### Forearm Crutches

Code: ED2222

BUY

Lightweight forearm crutches with semi-circle cuff and anatomically shaped, moulded handgrips for even pressure distribution. Both Cuff and handgrip are height adjustable. Pair. Medium for user height: 1570 – 1780mm, Crutch height: 770 – 1070mm, Weight Capacity: 110g. Also available ED3588 Small, ED3571 Large.

#### Height

770

Available to:



## AP05 – Scooter – Electric



AP05

### Leo 4 Wheel Electric Scooter

Code: HS-528-RD2

HIRE

Leo 4 wheel compact scooter. 2 Step disengaging system, intelligent lighting system including indicators and brake lights for safety, ergonomic, adjustable swivel seat and storage space. Can be dismantled into 5 pieces. Seat width: 470mm, Maximum speed: 8km /h, Weight capacity: 136kg. Prior approval required.

Available to:





AP05

**Comet Heavy Duty Electric Scooter****Code: HS-728H-RD2****HIRE**

Heavy duty, rugged and powerful scooter suitable for outdoor use and users up to 220kg. Multiple safety features, extra padded seat and four individually adjustable suspension units. Seat Width: 660mm, Maximum speed: 10km/h, Weight capacity: 220kg. Prior approval required.

Available to: OT S LM

AP05

**Pathrider 10 Electric Scooter****Code: PR4-10****HIRE**

Pathrider 10 4-wheel scooter with mid back seat. Seat Width: 460mm, Maximum speed: Up to 8.5km/h, Weight capacity: 159kg. Prior approval required.

Available to: OT S LM**AP06 – Quadstick / Quadrapod**

AP06

**Walking Stick – Quadstick****Code: ED2086****BUY**

Walking stick with 4 footed base for increased stability. Offset handle enhances weight bearing distributions. Handle Height: 750 – 960mm, Base: 300 x 200mm, Weight Capacity: 110kg.

Width	Height	Depth
300	750	200

Available to: PH OT S LM

## AP09 – Transfer Equipment



### Handy Bar Transfer Aid for Cars

Code: CARBAR

BUY

Portable support handle to help safe transfer in and out of the car. Versatile aid can also be used in emergency situations to cut a seatbelt or break glass windows.

Width	Height	Depth
230	100	35

AP09

Available to:



### Handi Soft Turn Pad

Code: 519S

BUY

450mm diameter. Assists seated person swivel in their seat. Ideal for getting in and out of cars. Made from two foam discs with a nylon axle for rotation, bends to seat without impact to turning mechanism. Also available 519SL 510mm diameter.

Width	Depth
450	20

AP09

Available to:



### Padded Rota Seat

Code: 2901

BUY

Padded Rota Seat covered in soft fabric upholstery. This comfortable padded rotating seat assists the user in transferring from a seated position. Seat Diameter: 34cm. Maximum User Weight: 100kg.

Width	Height
340	340

AP09

Available to:





AP09

**ETAC Turner Transfer Device****Code: ED16090104****BUY**

ETAC Turner Transfer Device with Oval Grip allows easy transfers between seating positions for people who are able to bear their own weight when standing. Low non-slip footplate for secure, easy foot placement. Smooth running castors for all surface use. Compact and easy to position with knock-down folding function. Footplate diameter: 410mm Weight capacity: 150kg.

Available to:



AP09

**Leg Lifter, Multiple Lifting Loops****Code: P232****BUY**

Self help item to assist with lifting legs on or off bed. Made with strong webbing. Multiple pulling handle.

Available to:



## AP12 – Walking Frame



### All Terrain Wheeled Walker

Code: ED1423

BUY

Ideal for outdoor use with 8" (200mm) castors for increased mobility on uneven, outdoor or rough terrain surfaces. Adjustable Handle Height 820mm to 950mm, Seat Height 560mm, Weight 8.5kg, Capacity 130kg. Also available ED5186 Grey.

Width	Height	Depth
585	820	597

AP12

Available to: PH OT CH OS S LM

### Smooth Glide Walker

Code: ED1089

BUY

Recommended for general indoor use. Lightweight alloy frame with strong tube-in-tube construction. Moulded handgrips with soft touch brakes. 6" (150 mm) castors, adjustable handle height and fully moulded PU seat. Includes basket, bag and hidden PVC pouch. Seat Width: 360mm, Seat Height: 560mm, Handle Height: 820 – 960mm, Weight Capacity: 130kg, Unit Weight: 7.7kg. Also available ED1126 Petite with shorter seat and handle height. Also available in ED5179 Blue and ED5186 Grey.

Width	Height	Depth
580	820	620

AP12

Available to: PH OT CH OS S LM

### Quad Walker – Modula Deluxe with Rear Fork Wheels

Code: BR0202-X,Y,Z

BUY

Quad Walker – Modula Deluxe with Rear Fork Wheels suitable for indoor and outdoor use. Rear frame is wider to allow maximum walking space. Rear fork wheels with brakes mean no protruding brake lever on inside of wheel. BR0202-X Seat height: 500mm. BR0202-Y Seat height: 550mm. BR0202-Z Seat height: 590cm. Weight Capacity: 130kg, Unit Weight: 8.4kg.

Width	Height	Depth
580	770	690

AP12

Available to: PH OT CH OS S LM



AP12

**TrustCare Let's Go Indoor Walker****Code: TrustLGIW****BUY**

TrustCare Let's Go Indoor Walker Woodgrain with tray and bag. Handle Height 780 – 900 mm, Tray Height 680mm, Weight Capacity: 100kg, Unit Weight 6.5kg

Width	Height	Depth
540	780	630

Available to:



AP12

**Let's Go Out Walker, TrustCare****Code: TrustLGOW****BUY**

Let's Go Out Walker with big front (245mm) and rear (200mm) wheels, X frame folding system – folds inwards – making it easy to fold and store. Handle Height: 780-960mm, Seat Height: 590mm, Handle Width: 410mm, Weight capacity: 130kg, Unit Weight: 6.5kg

Width	Height	Depth
570	780	640

Available to:






**Jazz Rollator, Inward Folding, Seat Height 510mm, Weight Capacity 150kg**
**Code: 1559201-46-27**
**BUY**

Jazz Rollator lightweight, inward folding rollator suitable for indoor and outdoor use. Fully enclosed brake system. Seat Height 510mm, Handle Height 650-800mm, Weight Capacity 150kg, Unit Weight: 7.5kg. Also available 1559202-46-27 Seat Height 610mm, handle height 750-1000mm.

Width	Height	Depth
595	650	690

AP12

Available to: PH OT CH OS S LM


**Gazelle "A" Frame Rollator**
**Code: X660**
**BUY**

Gazelle "A" Frame Rollator, Four Wheels, Hand/Loop Brakes, Folding, Seat Height 570mm, Adjustable Handle Height 870mm to 970mm, Weight Capacity: 120kg, Unit Weight: 6kg.

Width	Height	Depth
590	870	620

AP12

Available to: PH OT CH OS S LM


**Wheeled Walker – Shopper**
**Code: ED3762**
**BUY**

Wheeled Walker- Shopper. Ideal for shopping or transporting items around the home. Includes a removable tray and front attaching basket with increased load weight. Sturdy steel frame supports users up to 170kg. 8" (200mm) castors for increased mobility on uneven, outdoor or rough terrain surfaces. Total weight 11kg, seat width 380mm, seat height 610mm & height adjustable handles 775mm – 890mm. Red only.

Width	Height	Depth
560	775	780

AP12

Available to: PH OT CH OS S LM

**Mighty Mack Wheeled Walker****Code: ED1492****BUY**

Mighty Mack Wheeled Walker. Super heavy duty model designed for users up to 200kg that maintains manoeuvrability. Extra wide seat (580mm sitting space) with in-built seat pad. Large 7" (180mm) wheels ideal for outdoor use. Adjustable handle height, loop brakes, removable backrest and wire shopping basket. Total weight 12.6kg, floor to seat height 540mm, seat width 510mm & floor to handle height 820mm – 925mm. Red only. Also available ED1218 Mack and ED1645 Mini Mack.

Width	Height	Depth
710	820	650

AP12

Available to:

**Tri-Wheel Walker****Code: ED1355****BUY**

Tri-Wheel. Ideal for negotiating tight spaces, this model is designed for enhanced manoeuvrability and a smaller turning radius. Lightweight aluminium frame with easy fold mechanism. Height adjustable handles, loop brakes and large 8" (203mm) puncture free wheels. Includes vinyl pouch and removable front shopping basket. Total weight 7.9kg, folded width 200mm, floor to handle height 870-970mm. Maximum user weight 100kg. Red only.

Width	Height	Depth
200	870-970	

AP12

Available to:

**Push Down Wheeled Walker****Code: ED1553****BUY**

Ideal for physically or cognitively impaired users. Push down brake activation system for people with limited grip strength. Recommended for general indoor use. 6" (150mm) castors, adjustable handle height and fully moulded PU seat. Includes basket, bag and hidden PVC pouch. Seat Width: 360mm, Seat Height: 560mm, Handle Height: 810 – 945mm, Weight Capacity: 130kg, Unit Weight: 8kg.

Width	Height	Depth
575	810	610

AP12

Available to:



**Gutter Arm Walker****Code: BR0213****BUY**

Sturdy Gutter Arm Walker with widened rear frame for maximum walking space, light touch brake system, rear forked wheels, brakes, padded seat, flip back gutter arms for maximum seating space, storage bag. Easy to fold for transport. Seat Width: 450mm, Seat Height: 530mm, Armrest height: 1010 – 1260mm, Armrest Length: 290 – 400mm, Weight Capacity 130kg, Unit Weight: 14kg.

Width	Height	Depth
650	1010	700

AP12

Available to: **PH** **OT** **CH** **OS** **S** **LM****Space Saver Walker Folding Indoor Walking Frame with Wheels and Glides****Code: 4200-B****BUY**

Lightweight Folding Indoor Walking Frame with Front Wheels and Rear Glides. Folds inwards. Height adjustable: 810-910mm, suitable for user height: 4'10" (147cm) to 6'8" (203cm). Front Wheels diameter: 100mm. Weight capacity: 113kg, Weight: 3kg.

Width	Height
482	810

AP12

Available to: **PH** **OT** **CH** **OS** **S** **LM****Large Walking Frame with Wheels and Skis****Code: ED1232****BUY**

Large Walking Frame, Front Wheels, Rear Skis, Folding, Adjustable Height 850mm to 1100mm. Width between handles 500mm, Weight 4kg, Weight Capacity 110kg.

Width	Height	Depth
640	850	400

AP12

Available to: **PH** **OT** **CH** **OS** **S** **LM**

## AP13 – Walking Stick



AP13

### Aluminium Soft Grip Handle Walking Stick Code: ED1416

BUY

Lightweight, aluminium with soft grip designed to reduce wrist pressure and stress. Includes wrist strap. Height adjustable from 760mm to 990mm to accommodate most users (up to 195cm (6'3") height). Shaft diameter 22mm. Weight 350g. Weight Capacity 110kg.

#### Height

760

Available to:



AP13

### Aluminium Devon Handle Walking Stick Code: ED1379

BUY

Lightweight, aluminium cane with broad weight-bearing moulded grip, raised on one end to lessen possibility of hand slipping. Height adjustable from 785mm to 990mm to accommodate most users – up to 195cm (6'3"). Shaft diameter 22mm. Weight 325g. Weight Capacity 110kg.

#### Height

785

Available to:



AP13

### Aluminium Crook Handle Walking Stick Code: ED1577

BUY

Lightweight, aluminium cane with traditional soft crook handle for secure grip and even weight distribution. Height adjustable from 762mm to 990mm to accommodate most users up to 195cm in height. Shaft diameter 22mm. Weight 380g. Weight Capacity 110kg.

#### Height

762

Available to:





AP13

**Fischer Arthritic Grip Walking Stick – Left Hand****Code: 750L****BUY**

Ideal for people who have difficulty gripping a regular walking stick. Ergonomic palm support handle distributes pressure evenly across the hand. Height adjustable, Weight Capacity: 100kg. Also available: 750R Right Hand.

**Height**

760

Available to: **PH** **OT** **CH** **OS** **S** **LM****AP15 – Walking Stick Holder / Strap**

AP15

**Walking Stick Holder – Wrist Strap****Code: ED1256****BUY**

Safety wrist strap with easy elastic strap attachment and long fixed cord. Suits 16 to 22 mm walking sticks.

Available to: **PH** **OT** **CH** **OS** **S** **LM** **RN**

AP15

**Walking Stick Holder – Frog****Code: ED1706****BUY**

Designed to hold a walking stick upright while not in use. Attaches easily to any flat surface such as a table or desk. Foam pads protect surface. Spring loaded plastic holder clamps to walking stick. Suitable for most walking sticks with a maximum shaft diameter of 25 mm

Available to: **PH** **OT** **CH** **OS** **S** **LM** **RN**

## AP16 – Power Drive Wheelchair



AP16

### R4 Foldable Power Wheelchair

Code: PRR4

HIRE

R4 Power Chair, Rear Wheel Drive, Swing Away Leg Rests. The ultimate economical folding power chair. Combines rear anti-tip wheels for stable outdoor performance with a compact frame for smooth indoor manoeuvring. Standard seating dimensions: 457 x 406mm (18 x 16"). Max weight capacity: 113kg. Prior Approval Required.

Width

615

Depth

1092

Available to:



AP16

### Quantum Q6 Edge Power Chair

Code: Q6EDGE

HIRE

Quantum Q6 Edge Power Chair Mid Wheel Drive Q-logic Controller With Std Motors. Engineered to meet the performance needs of the most active user. The Q6 Edge accepts a complete range of seating and electronics options to deliver exceptional rehab capability at an excellent value. Synergy Seat adjustable width and depth: 250 – 560mm. Max weight capacity: 136kg. Prior Approval Required.

Width

610

Depth

953

Available to:



## AP17 – Wheelchair – Manual (standard)



AP17

### Manual Self Propelled Wheelchair 16 x 18

Code: ED1508

HIRE

Premium self-propelled wheelchair with lightweight aluminium frame and compact folding design. Height adjustable frame is equipped with padded seat and backrest, padded lift up armrests and removable anti-tip wheels for added safety. Detachable, height adjustable footrests include heel loops for increased comfort and fold away footrests for increase accessibility. Seat: 405x410mm. Seat Height: 510mm. Weight: 16kg. Maximum Weight Capacity: 110kg. Also available ED1294 18" Seat: 457x410mm.

Width

405

Depth

410

Available to:




**Karma Eagle LW Self Propelled  
Wheelchair 18 x 18**
**Code: KM8020Q-1818**
**HIRE**

Folding light weight aluminium self propelled wheelchair, swing away foot plates and arm rests, quick release 24" rear wheels. Seat: 460x460mm. Seat Height: 510mm. Back Rest Height: 400 – 475mm. Weight: 14.7kg. Maximum weight capacity: 130kg. Available in various sizes.

Width	Height	Depth
660	930	1080

AP17

 Available to: **PH** **OT** **S** **CH** **OS** **LM**

**Karma Eagle Heavy Duty Self Propelled  
Wheelchair 20 x 18**
**Code: KM8020Q-20**
**HIRE**

Heavy Duty Self Propelled Wheelchair with 160kg weight capacity. Height adjustable seat, footrests and armrests. Seat: 500x460mm. Back Rest Height: 400-475mm. Maximum Weight Capacity: 160kg.

Width	Height	Depth
725	930	1080

AP17

 Available to: **PH** **OT** **S** **CH** **OS** **LM**

**Karma Eagle LW Transit Wheelchair 16 x 16**
**Code: KM8520F12-16**
**HIRE**

Folding light weight aluminium Transit II wheelchair, attendant propelled swing away foot plates and arm rests, foldable backrest. Seat: 410x410mm. Seat Height: 550mm. Back Rest Height: 400 – 475mm. Weight: 13.5kg. Maximum weight capacity: 130kg. Available in various sizes.

Width	Height	Depth
580	920	1040

AP17

 Available to: **PH** **OT** **S** **CH** **OS** **LM**

**Karma S Ergo 125 Self Propel 18 x 17****Code: KMS125-18****HIRE**

Lightweight Wheelchair with the unique S shaped seat. Seat and backrest upholstery and pads treated with Aegis Microbe shield to reduce stains and odour. Swing away foot plates and arm rests, quick release solid rear tyres, push to lock with attendant braking system and folding back. Seat: 460x430mm. Seat Height: 510mm. Back Rest Height: 400mm. Weight: 14.5kg. Maximum Weight Capacity: 115kg. Available in various sizes.

Width	Height	Depth
640	910	1000

AP17

Available to:

**Manual Transit Wheelchair 18 x 16****Code: ED1317****HIRE**

Compact transit wheelchair. Features padded seat and backrest, padded lift up armrests and comfortable profiled attendant grip handles. Detachable, height adjustable footrests include heel loops for increased comfort. Seat: 457x410mm. Back Rest Height: 510mm. Pneumatic 12" rear wheels and solid 7" rubber front wheels for smooth transit. Weight: 13kg. Maximum user weight: 110kg. Also available ED1393 Seat: 405x410mm.

Width	Height	Depth
457	510	410

AP17

Available to:

**Wheelchair – Manual – Light Weight (Transit Version)****Code: ENDL18T****HIRE**

Typhoon lightweight wheelchair includes an adjustable slung backrest, foam cushion and variable height push handles. Seat Width 450mm, Seat Depth 410mm, Weight Capacity 110Kg. Available in a range of sizes in Transit and Self Propelled models. Accessories also available including leg rests and supports.

Width	Depth
450	410

AP17

Available to:





## AP19 – Wheelchair – Manual (customised)



AP19

### One Arm Drive Self Propelled Wheelchair, Left

Code: ENDWCOADL

HIRE

One Arm Drive Wheelchair is designed for the hemiplegic user and is operated by a double pushrim control system that can be mounted on either side. Seat Width: 400, 430 or 460mm. Seat Depth: 400, 430 or 460mm. Vinyl upholstery, swing away footplates, full length non adjustable armrests. Available for Left or Right side. Maximum Weight Capacity: 100kg. Prior Approval Required.

Available to:



AP19

### Catalyst 4 Ultra Light Weight Wheelchair

Code: CATALYST (K0004)

HIRE

Customizable lightweight wheelchair. Flip Back Armrests. Push to Lock Brakes. Seat Width: 360-560mm, Seat Depth: 360-510mm, Front Seat Height: 330-560mm, Rear Seat Height: 310-480cm. Maximum Weight Capacity: 113kg. Customizable parts available under AP14: Armrests, Elevating Leg Rests, Anti-Tippers. Prior Approval Required.

Available to:



## AP22 – Walking Frame Accessories



AP22

### Cane/Stick Holder for Wheeled Walker

Code: ED1478

BUY

Attaches to frame of wheeled walker or walking frame to allow for easy storage and transport for canes or walking sticks. Comprised of upper clip (near handles) and lower cup (near wheels) to secure cane top and bottom. Suitable for all models excluding the Tri-Wheel.

Available to:



AP22

### Oxygen Bottle Carrier for Wheeled Walker

Code: ED1430

BUY

Designed to sit under the seat of any 'A' frame wheeled walker. Suspended by hooks attaching to front and back cross piece. Angled for optimal air flow and safety. Fits an oxygen cylinder up to 125mm in diameter. Suitable for all models excluding the Tri-Wheel and Shopper.

Available to:



## AR00 – Orthoses – Splints / Supports / Braces / Slings

### SPLINTS AND BRACING

[BUY](#)

A wide range of ankle, knee, upper limb, lumbar/back supports and bracing are available. Please refer to our website for full product range.



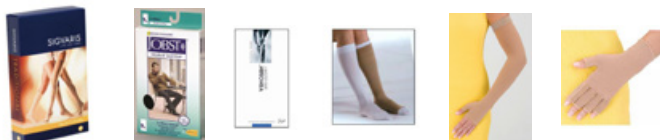
AR00

## AR22 – Compression Garments, not custom-made

### COMPRESSION GARMENTS

[BUY](#)

A comprehensive range of compression stockings, gloves and armsleeves are available including Venosan, Jobst, Sigvaris, Medi. Please contact us or refer to our website for the full product range.



**SIGVARIS**  
LIFE FOR LEGS

**JOBST**  
Comfort, Health and Style!

**VENOSAN**  
COMPRESSION STOCKINGS

AR22

Available to:



## AR28 – Hip Protectors



AR28

### HipSaver – Nursing Home Veterans High Compliance Pack – Female Medium

Code: EDHSNHVHCPFM

[BUY](#)

HipSaver – Nursing Home Veterans High Compliance Pack – Female Medium. Kit contains 6 pants with soft hip protecting pads permanently sewn in. Also available in packs of 1 and 3 and various sizes.

Available to: [RN](#) [PH](#) [OT](#) [S](#) [LM](#)



AR28

### HipSaver – Nursing Home Veterans High Compliance Pack – Male Large

Code: EDHSNHVHCPML

[BUY](#)

HipSaver – Nursing Home Veterans High Compliance Pack – Male Large. Kit contains 6 pants with soft hip protecting pads permanently sewn in. Also available in packs of 1 and 3 and various sizes.

Available to: [RN](#) [PH](#) [OT](#) [S](#) [LM](#)



AR28

### HipSaver – QuickChange Starter Kit – Female Small

Code: EDHSQCSKFS

[BUY](#)

HipSaver – QuickChange Starter Kit – Female Small. Kit contains 3 pants with open pouches and 1 set of removable soft hip protecting pads. Also available in packs of 1 and 6 and various sizes.

Available to: [RN](#) [PH](#) [OT](#) [S](#) [LM](#)



AR28

### HipSaver – QuickChange Starter Kit – Male X Large

Code: EDHSQCSKMEL

[BUY](#)

HipSaver – QuickChange Starter Kit – Male Extra Large. Kit contains 3 pants with open pouches and 1 set of removable soft hip protecting pads. Also available in packs of 1 and 6 and various sizes.

Available to: [RN](#) [PH](#) [OT](#) [S](#) [LM](#)



AR28

**HipSaver – SlimFit High Compliance –  
Female Extra Small**
**Code: EDHSSFHCFXS****BUY**

HipSaver – SlimFit High Compliance – Female Extra Small. 1 pant with soft hip protecting pads permanently sewn in. Also available in packs of 3 and 6 and various sizes.

Available to:



AR28

**HipSaver – SlimFit High Compliance –  
Male Small**
**Code: EDHSSFHCMS****BUY**

HipSaver – SlimFit High Compliance – Male Small. 1 pant with soft hip protecting pads permanently sewn in. Also available in packs of 3 and 6 and various sizes.

Available to:



## AR29 – Limb Protectors



### Dermasaver Arm Tube, Medium

Code: EDDSATM

[BUY](#)

Limb Protectors – Dermasaver Arm Tube, Medium. Protects from wrist to above the elbow, protecting fragile skin from damage caused by friction, abrasion and pressure. Available in various sizes. Also available Forearm, Elbow, Double Elbow, Leg, Knee, Shin-Knee..

AR29

Available to:



### Dermasaver Shin Tube, Medium

Code: EDDSSTM

[BUY](#)

Limb Protectors – Dermasaver Shin Tube, Medium. Protects from ankle to below the knee. Ideal for wheelchair users. Available in various sizes. Also available Forearm, Elbow, Double Elbow, Leg, Knee, Shin-Knee.

AR29

Available to:



### Limb Protectors – Wool Elbow & Shin Protector Sleeve, Pair

Code: P149

[BUY](#)

Soft wool sewn into a sleeve with soft ribbing at each end. Provides protection to elbows or shins to help with the prevention of pressure sores. Width 90 – 120mm

#### Height

360

AR29

Available to:



## AS01 – Blood Pressure Monitor



AS01

### Automatic Blood Pressure Monitor – Upper Arm

Code: BPSZ-102

BUY

Automatic Blood Pressure Monitor – Upper Arm, Single button operation, 30 memory storage capacity. Fits upper arm circumference 220 – 420mm.

Width	Height	Depth
103	80	129

Available to:



AS01

### Automatic Blood Pressure Monitor – Wrist

Code: BSBP-002

BUY

Automatic Blood Pressure Monitor – Wrist. One touch operation, 90 memory storage capacity. Suits wrist circumference 125 to 205mm.

Width	Height	Depth
61	25	62

Available to:



# AT12 – Drip Stand



AT12

**Drip Stand for Adjustable Bed**

**Code: INVIV**

**BUY**

Intravenous drip stand suitable for attachment to an adjustable bed with a metal frame.

Available to:



AT12

**Drip Stand – freestanding**

**Code: X370**

**BUY**

Freestanding intravenous drip stand, adjustable height, 4 hooks, on castors.

Available to:



# AU01 – Bottom Wiper



AU01

**ETAC Toilet Paper Tongs Torkel** **Code: ED80304001** **BUY**

Torkel toilet paper tongs make it easier for people with grip and mobility problems to manage personal hygiene themselves.

**Height**

330

Available to: OT LM RN S PH



AU01

**Bottom Wiper** **Code: AA2650** **BUY**

Bottom Wiper – Standard, Non Folding. A moulded plastic head with recessed serrations to grip the paper, which is easily removed after use.

**Height**

265

Available to: OT LM RN S PH

# AU02 – Button Hook



AU02

**Button Hook** **Code: AA4677**

Button Hook – Kings

Available to: OT LM RN S PH

# AU04 – Dressing Stick



AU04

**Dressing Stick** **Code: AA4680**

Dressing Stick – Timber, Rubber Thimble, Hook

Available to: OT LM RN S PH



## AU08 – Long Handled Comb/Brush



AU08

**ETAC Beauty Kit**

**Code: ED80210066**

**BUY**

A lightweight range of ergonomically designed body care products with a unique shape that makes reaching easier. Kit includes 1 x Body Washer 380mm long, 1 x Long Comb 370mm long, 1 x Multipurpose Grip with 3 nail files. The Multipurpose Grip can hold nail files in the narrow end, whilst the wider end may be used to hold a tooth brush or shaver.

Available to: [OT](#) [LM](#) [RN](#) [S](#) [PH](#)



AU08

**ETAC Beauty Hair Washer, 360mm long**

**Code: ED80210078**

**BUY**

Substitutes for the fingers in the application of shampoo and gentle scalp massaging. Curved design and ergonomic oval shaped handle makes it easier to reach the head without strain on the hands, shoulders or arms. 360mm long.

**Height**

360

Available to: [OT](#) [LM](#) [RN](#) [S](#) [PH](#)



AU08

**ETAC Beauty Back Washer, 770mm long**

**Code: ED80210080**

**BUY**

Designed to make it easy to reach and clean the back area. The wash cloth does not absorb water, making it light and balanced even when wet. The ergonomic handle is designed to facilitate a two handed grip for people with limited strength or reach. 770mm long

**Height**

770

Available to: [OT](#) [LM](#) [RN](#) [S](#) [PH](#)



AU08

**Long Handle Bath Sponge**

**Code: AA1831C**

**BUY**

Long Handle Bath Sponge, 610mm long

**Height**

610

Available to: [OT](#) [LM](#) [RN](#) [S](#) [PH](#)

## AU10 – Long Handled Toe Wiper



AU10

### Long Handled Toe Wiper

Code: AA1847

[BUY](#)

Long Handle Toe Wiper – comes with two pads, 710mm Length

#### Height

710

Available to:



## AU13 – Donning/doffing aids (i.e. for socks, stockings)



AU13

### Doff N Donner Device

Code: DDDEVICE

[BUY](#)

Doughnut shaped soft device that allows you to quickly guide a compression garment up and down you arm or leg. filled with leak proof fluid for compression garment donning

Available to:



AU13

### Doff N Donner Cone

Code: DDCONE

[BUY](#)

The Cone loading device makes it even easier to roll your compression garments onto the Doff N Donner Device. The suction cap built into the bottom of the Cone allow it to firmly attach to a clean, flat surface.

Available to:



AU13

### Terry Cloth Sock Aid

Code: A7273

[BUY](#)

A terry cloth covered sock aid used to help easily apply socks without the need to bend. Inner nylon lining to reduce friction, outer terry cloth lining holds sock in place, pulling tabs with loop handles for easy, one-handed application.

Available to:



AU13

### Compression Stocking Aid Frame

Code: 110913

[BUY](#)

Lightweight frame designed to hold the stocking open to allow easy insertion of the foot. Suitable for calf size up to 18" (460mm).

Available to:



## AV01 – Bicycle – Stationary Exercise



### Bodyworx A932 Recumbent Bike – Deluxe Series

Code: A932

HIRE

Recumbent bike with 32 Level computer controlled resistance. 12 Preset programs – 4 x Heart Rate, 4 x Custom, 1 x Watt Control, 1 x Body Fat, 1 x Recovery, Manual. Chest strap and built-in receiver for accurate heart rate monitoring and control. Fully adjustable seat. Maximum User Weight: 130 KG

Width	Height	Depth
700	1220	1800

AV01

Available to: PH S CH OS EP

### Bodyworx A905 Upright Exercise Bike – Deluxe Series

Code: A905

HIRE

Upright Exercise Bike with 32 Level computer controlled resistance. 12 Preset programs – 4 x Heart Rate, 4 x Custom, 1 x Watt Control, 1 x Body Fat, 1 x Recovery, Manual. Chest strap and built-in receiver for accurate heart rate monitoring and control. Fully adjustable seat. Maximum User Weight: 130 KG

Width	Height	Depth
570	1400	900

AV01

Available to: PH S CH OS EP

## AV02 – Pedals Exercise



### Exercise Pedals

Code: X410

BUY

Pedal Exerciser with adjustable tension and foot straps.

AV02

Available to: PH S CH OS EP

## AV10 – Exercise Appliances – Progressive Elastic Resistance/ Hand Cone/Exercise Putty



**Gel Hand Therapy Ball, Medium, Green**

**Code: PAT-AA9802**

Gel ball for hand therapy. Also available PAT-AA9801 Soft Blue, PAT-AA9803 Firm Orange.

AV10

Available to:



**Progressive Elastic Resistance –  
Thera-Band, Thin, Medium Red,  
5.5mtr Length**

**Code: 716902**

**BUY**

Latex band for resistive exercise. Resistance level is determined by the thickness of the band. Medium Red 5.5mtr length. Also available 716901 Yellow, 716903 Heavy Green, 716904 Extra Heavy Blue, 716905 Special Heavy Black.

**Height**

5500

AV10

Available to:



## AZ01 – Bath Board / Bench / Seat



### Bath Transfer Bench with Padded Seat and Backrest

Code: ED1515

BUY

Sturdy bath transfer bench with vinyl covered, padded seat and backrest. Lightweight frame. Independent height adjustable legs with rubber suction cups for added security. Seat Width: 610mm, Seat Depth: 400mm, Seat Height: 450 – 550mm, Weight Capacity: 110kg, Unit Weight: 5.3kg.

Width	Height	Depth
720	815	470

AZ01

Available to: OT RN S

### Plastic Bath Seat/Board with Handgrip

Code: ED1805

BUY

Lightweight contoured moulded plastic seat with drainage holes and integrated soap dish. Width adjust to fit securely across the top of most baths. Large handgrip for easy positioning and transfers. Grip range: 450 – 710mm, Weight Capacity: 110kg, Unit Weight: 3kg.

Width	Depth
780	370

AZ01

Available to: OT RN S

### Swivel Bath Seat

Code: ED1522

BUY

Seat swivels a full 360° in both directions and includes locking lever to set positioning. Contoured moulded plastic seat with drainage holes and side support arms. Lightweight metal frame includes non-slip plastic ends. Width adjusts to fit most baths. Weight Capacity: 110kg, Unit Weight: 6kg.

Width	Height	Depth
730	500	530

AZ01

Available to: OT RN S


**Bath Transfer Bench with Pivoting and Sliding Seat**
**Code: E115SSLP**
**BUY**

Bath transfer bench with seat that rotates a full 360° and slides from end to end allows easier entry onto the bench and into the bath. Padded backrest, independent height adjustable legs with rubber suction cups. Seat Width: 430mm, Seat Depth: 370mm, Weight Capacity: 130kg, Unit Weight: 8.8kg.

Width	Height	Depth
800	930	510

AZ01

 Available to: OT RN S
**AZ02 – Shower – Hand Held**

**Hand Held Shower**
**Code: XL174M**
**BUY**

Hand Held Shower, 2000mm Double Seam Hose with Metal Wall Bracket. Also available: XL174MA 1500mm hose.

AZ02

 Available to: OT RN S

**Hand Held shower on Adjustable Rail**
**Code: XL142CSR**
**BUY**

Hand Held Shower, 2000mm Double Seam Hose on Adjustable Handset Rail, Chrome Unit. Also available: XL142CSRAI Almond Ivory handpiece.

AZ02

 Available to: OT RN S

## AZ04 – Shower Stool / Chair



**ETAC Edge Shower Stool,  
Triangle for Corner**

**Code: ED81801010**

**BUY**

Triangular shaped stool fits perfectly in a shower corner, taking up minimal space. Height adjustable legs with soft, large ferrules for excellent floor grip. Saddle positioning or an angle seat help to relieve hip discomfort and facilitate standing. Seat Width: 450mm, Seat Height: 420 – 570mm, Weight Capacity: 130kg, Unit Weight: 2.6kg.

AZ04

Available to:



**ETAC Easy Swivel Shower Stool,  
Round with removable swivel seat**

**Code: ED81901050**

**BUY**

Round Shower Stool with swivel seat that can be easily removed leaving non-rotating contoured round seat. Adjustable legs angle outwards for increased stability. Seat Height: 495 – 535mm, Weight Capacity: 150kg, Unit Weight: 2.8kg.

AZ04

Available to:




**ETAC Smart Swivel Shower Stool  
with removable swivel seat**

Code: ED81951050

BUY

Rectangular Shower Stool with swivel seat that can be easily removed leaving non-rotating contoured rectangular seat. Adjustable legs with soft ferrules to prevent slippage on wet surfaces. Seat Height: 420 – 570mm, Weight Capacity: 150kg, Unit Weight: 3.2kg.

Width	Height	Depth
430	420	380

AZ04

Available to:


**ETAC Swift Shower Chair / Stool**

Code: ED81701030

BUY

Simple yet versatile product easily adaptable to suit individual needs – basic shower stool; add arm supports; add back support to convert to a full shower chair. Adjustable legs with soft, self-adjusting ends that automatically adapt to uneven floors for secure grip. Easy assembly/ disassembly without the need for tools. Seat Width: 540mm, Seat Height: 420 – 470mm, Seat Depth: 410mm, Width Between Arm: 450cm, Weight Capacity: 130kg, Unit Weight: 3.1 – 4.7kg.

Width	Height	Depth
540	800	500

AZ04

Available to:


**Shower Stool with Arms Zinc**

Code: BTS115200

BUY

Adjustable shower stool with arms, plastic seat, height adjustable legs, epoxy powdercoated zinc treated mild steel. Seat Width: 340mm, Seat Height: 510 – 630mm, Seat Depth: 290mm, Width Between Arms: 470mm, Weight Capacity: 110kg.

Width	Height	Depth
510	695	380

AZ04

Available to:







AZ04

**Aluminium shower Stool with Clip on Seat****Code: ED11140****BUY**

Lightweight shower stool with clip on durable molded plastic seat, height adjustable legs with anti-slip tips. Seat Width: 410mm, Seat Height: 480 – 590mm, Seat Depth: 365mm, Weight Capacity: 110kg, Unit Weight: 2.6kg.

Width	Height	Depth
530	600	450

Available to: OT RN S PH LM

AZ04

**Shower Chair****Code: ED11102****BUY**

One piece plastic moulded seat with drainage slots, contoured back support, integrated armsrests, height adjustable legs with rubber tips, powdercoated mild steel with aluminium eg extensions for improves rust protection. Seat Width: 440mm, Seat Depth: 370mm, Seat Height: 490 – 590mm, Width Between Armrests: 495mm, Weight Capacity: 120kg, Unit Weight: 4kg.

Width	Height	Depth
545	800	440

Available to: OT RN S PH LM

AZ04

**Shower Chair Extra Wide 500mm****Code: BTS105600****BUY**

Designed for larger occupants with a greater width between arms of 510mm. One piece countoured plastic back seat, height adjustable legs with rubber tips, epoxy powdercoated zinc treated mild steal. Seat Width: 410mm, Seat Depth: 390mm, Seat Height: 440 – 560mm, Width Between Arms: 510mm, Weight Capacity: 135kg.

Width	Height	Depth
590	790	530

Available to: OT RN S PH LM



AZ04

**Bariatric Shower Chair****Code: 9785-2****BUY**

Deep, wide seating surface, contoured seat and backrest, height adjustable legs, durable aluminium frame with cross brace design for maximum stability. Seat Width: 430mm, Seat Depth: 410mm, Seat Height: 410 – 510mm, Weight Capacity: 318kg, Unit Weight: 5kg.

Width	Height	Depth
460	750	530

Available to:

**AZ06 – Waterproof Protectors for limbs**

AZ06

**Waterproof Limb & Cast Protector –  
Adult Short Leg****Code: V60785**

Re-usable cast and bandage protector for use in the shower/bath to stop moisture from penetrating the protected area. Also available: Adult Hand, Adult Short Arm, Adult Long Arm, Adult Foot & Ankle, Adult Long Leg, Pediatric Medium Arm, Pediatric Large Arm, Paediatric Large Leg.

Available to:



## BD03 – TENS Machine



### Analogue TENS Machine

Code: TENS A

BUY

Easy to use analogue TENS machine kit includes electrode leads, self adhesive electrodes, 9-volt battery and hard plastic carry case for safe storage of all components. Also available: Replacement leads and self adhesive electrodes.

Width	Height	Depth
65	95	23

BD03

Available to: PH CH OS S LM PC



### Digital TENS Machine

Code: TENS D

BUY

Digital TENS machine kit with LCD display and easy operation press buttons. Offers 32 stimulation modes, 5 adjustable TENS modes, 3 adjustable EMS modes and 24 professional presets of TENS and EMS. Kit includes electrode leads, self adhesive electrodes, 9-volt battery, AC power adaptor and hard plastic carry case for safe storage of all components. Also available: Replacement leads and self adhesive electrodes.

Width	Height	Depth
60	118	31

BD03

Available to: PH CH OS S LM PC



### Wi Touch Pro Wireless Tens Machine

Code: EDWITPRO

BUY

Wireless Tens Machine specifically designed to target back pain. Thin, flexible and discreet with no wires or belts – can be worn under clothing. Easy to use, can be used with or without wireless handheld remote control. Comes with 5 sets of gel pads.

Width	Height	Depth
191	90	18

BD03

Available to: PH CH OS S LM PC

## BE01 – Bidet includes electronic model



BE01

Coway Electric Bidet with Standard Seat

Code: BA08AR

BUY

Electric Bidet with round seat for standard pans. Instant heat wash with wide spray function, dry, warm seat, wireless waterproof remote control with large button and Braille which can be mounted on wall or on bidet with auto button. Weight capacity 200kg. Also available BA08AE elongated seat for larger pans.

Available to:



## BE02 – Commode Chair – (Bedside) – Toileting Appliances



BE02

Bedside Commode Chair

Code: ED1386

BUY

Versatile commode suitable for use as a bedside commode, bedside chair or shower chair. The cover fits over the top of the toilet seat to convert the commode into a standard bedside chair. Front hinged toilet seat for easy access to the lift out pan with lid, padded armrests, backrest and toilet seat, height adjustable legs. Seat Width: 450mm, Seat Depth: 460mm, Seat Height: 500 – 610mm, Width Between Armrests: 500mm, Colour: Blue, Weight Capacity: 110kg, Unit Weight: 12kg.

Width

660

Height

820

Available to:



BE02

Bedside Commode Deluxe Champagne

Code: BEC046120

BUY

Fold back padded seat, removable bowl with lid and carry handle, curved padded back, zinc treated frame, adjustable height and angle (50 – 65cm), three sided skirt to hide the bowl. Seat Width: 440mm, Seat Depth: 460mm, Seat Height: 480 to 650mm. Weight Capacity: 110kg.

Available to:





BE02

**Commode Chair Overwide**

Code: E333W

**BUY**

Overwide Bedside Commode Chair, Adjustable Height, Side Skirts, Includes Pan. Seat Width: 550mm, Seat Depth: 460mm, Seat Height: 470 – 595mm, Width Between Armrests: 550mm, Colour: Brown, Weight Capacity: 200kg

Width	Height
660	865

Available to: OT RN LM CA

BE02

**ETAC Swift Commode Complete with detachable padded seat and back**

Code: ED81702030

**BUY**

Versatile 3 in 1 commode chair with detachable padding for seat and backrest. Can also be used as a shower chair or freestanding toilet seat raiser with back rest and armrests easily detached without tools. Integrated pan and lid that locks automatically when lifted. Seat Width: 540mm, Seat Height: 420 – 570mm, Width Between Armrests: 450mm, Weight Capacity: 130kg, Unit Weight: 5.4kg.

Width	Height
560	420

Available to: OT RN LM CA**BE04 – Mobile Shower Commode Chair**

BE04

**ETAC Clean Height Adjustable Mobile Shower Commode**

Code: ED80209208

**BUY**

Fully adjustable mobile shower commode to fit over most toilets. Seat is fully open at rear and includes front recess, swing away/removable armrests, curved slide away footplate, easy tool-less height adjustment. 4 Lockable Wheels. Seat Width: 480mm, Seat Height 475 – 600mm, Width Between Armrests: 435mm, Weight Capacity: 130kg, Unit Weight: 14.2kg. Pan and accessories available separately.

Width
550

Available to: OT RN S PH LM CA



**ETAC Clean 55 Self Propel Mobile Shower Commode**

**Code: ED80209216**

**BUY**

Self propelled mobile shower commode, generous seat space in front of wheels to allow side transfers, front seat recess and fully open at rear, swing away/removable armrests, slide away curved footplate, 24" rear wheels. Colour: Green. Seat Width: 480mm, Seat Height: 550mm, Width Between Armrests: 435mm, Weight Capacity: 130kg, Unit Weight: 20kg. Pan and accessories available separately.

Width	Height
690	1070

BE04

Available to:



**ETAC Swift Mobile Shower Commode with Pan Holder**

**Code: ED80209405**

**BUY**

Height adjustable mobile shower commode with fully adjustable soft back support for individualised fit. Swing away arm and foot support, includes pan holder. Seat height can be adjusted in intervals of 20mm without the need for tools. Seat Height: 450 – 600mm, Width Between Armrests: 480mm, Weight Capacity: 135kg, Unit Weight: 16.6kg. Pan and accessories available separately.

Width	Height	Depth
580	940	940

BE04

Available to:



**ETAC Swift Mobile 160 Mobile Shower Commode with Pan Holder**

**Code: ED80209422**

**BUY**

A sturdy chair for heavier users. It has all the benefits of the Swift Mobile while also sturdy enough to handle a maximum user weight of 160kg. An increased width between the arm supports of 540mm provides extra space. Seat Height: 450 – 600mm, Width Between Armrests: 540mm, Weight Capacity: 160kg, Unit Weight: 17.3kg. Pan and accessories available separately.

Width	Height	Depth
630	940	940

BE04

Available to:




**RAZ Attendant Tilt Mobile  
Shower Commode**

Code: ZTILT

BUY

RAZ Attendant Tilt – 40 Degree gas strut assisted mobile shower commode, stainless steel frame with 5" dual locking castors, 20" fixed back, tension-adjustable fabric backrest with fixed height, flip up padded armrests, swing away footrests, tilt assist pedal. Seat size W18" x D16" or W18" x D19". Pan and open or closed seat available separately.

BE04

Available to:


**BE06 – Over Toilet Frame / Toilet Surround**

**ETAC Swift Freestanding Toilet Seat Raiser  
/ Over Toilet Frame**

Code: ED81702020

BUY

Freestanding height adjustable over toilet frame with full seat, built in splash guard and detachable armrests. Can also be used as a stand alone commode. Seat Width: 540mm, Seat Height: 420 – 570mm, Width Between Arm Supports: 450mm, Weight Capacity: 130kg, Unit Weight: 3.9kg.

Width	Height
560	420

BE06

Available to:


**ETAC Swift Commode Complete with  
detachable padded seat and back**

Code: ED81702030

BUY

Versatile 3 in 1 commode chair with detachable padding for seat and backrest. Can also be used as a shower chair or freestanding toilet seat raiser with back rest and armrests easily detached without tools. Integrated pan and lid that locks automatically when lifted. Seat Width: 540mm, Seat Height: 420 – 570mm, Width Between Armrests: 450mm, Weight Capacity: 130kg, Unit Weight: 5.4kg.

Width	Height
560	420

BE06

Available to:





BE06

**Over Toilet Frame –  
freestanding with splashguard**

Code: BTT153200

BUY

Freestanding over toilet frame with seat and splash guard, height adjustable legs, zinc plated frame. Seat Width: 380, Seat Depth: 435mm, Seat Height: 475 – 595mm, Width Between Arms: 465mm, Weight Capacity: 110kg.

Width	Height	Depth
520	675	605

Available to: OT RN S PH LM CA

BE06

**Over Toilet Frame / Commode –  
Adjustable Height with Pan and Lid**

Code: ED1249

BUY

Can be used as freestanding over toilet frame or stand alone commode. Contoured seat with pan and lid, height adjustable legs with rubber stoppers, padded armrests. Frame dismantles. Width Between Arms: 460mm, Seat Height: 405-560mm , Weight Capacity: 130kg.

Width	Depth
530	605

Available to: OT RN S PH LM CA

BE06

**Over Toilet Aid W/Splash Guard Extra  
Wide Zinc Treated 500mm**

Code: BTT146300

BUY

Extra Wide over toilet aid with seat and splashguard to assist larger occupants. Reinforced zinc treated mild steel framed and moulded PVC seat. Seat Width: 380mm, Seat Depth: 435mm, Seat Height: 470 – 590mm, Width Between Arms: 500mm, Weight Capacity: 135kg.

Width	Height	Depth
600	680	590

Available to: OT RN S PH LM CA



**Toilet Surround Frame****Code: ED1164****BUY**

Freestanding toilet surround frame designed to fit around toilet to assist with transfers on and off the toilet. Height adjustable frame with padded armrests. Height: 680 – 830mm, Width Between Armrests: 460mm, Weight Capacity: 110kg, Unit Weight: 3.5kg.

Width	Height	Depth
560	680	460

BE06

Available to: [OT](#) [RN](#) [S](#) [PH](#) [LM](#) [CA](#)**Throne Rails – 3 in 1 Toilet Support Rail****Code: TR31PC****BUY**

Toilet Support Rail to assist users on and off the toilet. Fits directly to toilet pan. Rails can be played or folded down to allow wheelchair transfer. Can be used independently, with spacer (SPCR50 or SPCR80) to raise toilet seat height or with Coway Bidet. Width Between Rails: 600mm, Height Above Seat: 250mm (with adjustable legs), Weight Capacity: 150kg to 180kg.

Width	Height
510	260

BE06

Available to: [OT](#) [RN](#) [S](#) [PH](#) [LM](#) [CA](#)**Bariatric Throne Rail – Stainless Steel****Code: THRONEBAR****BUY**

Stainless Steel Toilet Support Rails to assist larger users on and off the toilet. Freestanding feet and rubber grips ensures weight is supported by floor rather than toilet itself. Can be used independently, with spacer (SPCR50 or SPCR80) to raise toilet seat height or with Coway Bidet. Width Between Rails: 600mm, Height Above Seat: 250mm (with adjustable legs), Weight Capacity: 150kg to 180kg.

Width	Height
600	250

BE06

Available to: [OT](#) [RN](#) [S](#) [PH](#) [LM](#) [CA](#)

## BE10 – Toilet Seat – Raised



BE10

### Adjustable Height Toilet Seat Raiser with Flip Up Arms

Code: ED1096

BUY

Height adjustable to 50, 100 or 150mm above the existing toilet seat. Includes lid and flip up armrests to assist with transfers. Easy install, fits majority of toilets. Seat Width: 360mm, Width Between Armrests: 470mm, Weight Capacity: 130kg.

Available to: OT RN S PH



BE10

### Raised Toilet Seat – 100mm with Lid

Code: ED1263

BUY

Fixed height toilet seat raiser with lid. Easy to attach, remove and clean. Ergonomically designed contoured one piece seat sits directly on bowl with front and rear recess for increased hygiene access. Also available in ED1270 50mm height and ED1744 150mm height. Weight Capacity: 130kg.

Width	Height	Depth
370	100	407

Available to: OT RN S PH



BE10

### Toilet Spacer – Toilet Seat Raiser – 50mm

Code: SPCR50

BUY

50mm Toilet Spacer designed to fit in between toilet pan and existing toilet seat. Can be used in conjunction with Throne Rails (TR31PC or THRONEBAR) or Coway Bidet. Also available SPCR80 80mm height.

Available to: OT RN S PH



BE10

### Pee Guard – Splashguard for toilet seat

Code: PEEGUARD

BUY

Fixes to the front of any porcelain toilet with self adhesive pads or with screws to any raised toilet seat. Soft flexible cup with joints allowing varied positioning, deflecting urine down into the bowl and preventing spillage under the toilet seat.

Available to: OT RN S PH


## GRAFTON - WA ONLY

### AC04 - Chair – Platform / Blocks

Available to:       

AC04	GGP/34	Wooden Chair Raise - Single
AC04	GGP/35	Wooden Chair Raise - Double
AC04	GGP/36	Stop Rock Mechanism

### AL04 - Lever Taps

Available to:  

AL04	GGP/131	WA ONLY - Lever Taps - Wall Stops
AL04	GGP/132	WA ONLY - Lever Taps - Basin Set
AL04	GGP/133	WA ONLY - Lever Taps - Hob Sink Set

### AL06 - Non Slip surfacing (including non slip strips)

Available to:    

AL06	GGP/60	WA ONLY - Non Slip Strips
AL06	GGP/75	WA ONLY - Non Slip Treatment - Up to 1.5 sq mtr
AL06	GGP/75A	WA ONLY - Non Slip Treatment - 1.5 - 6 sq mtr
AL06	GGP/75B	WA ONLY - Non Slip Treatment - Over 6 sq mtr

### AL09 - Rails (internal and external)

Available to:  

AL09	GGP/01	WA ONLY - 300MM - Rails - White Premium
AL09	GGP/02	WA ONLY - 450MM - Rails - White Premium
AL09	GGP/03	WA ONLY - 600MM - Rails - White Premium
AL09	GGP/04	WA ONLY - 750MM - Rails - White Premium

AL09	GGP/05	WA ONLY - 900MM - Rails - White Premium
AL09	GGP/06	WA ONLY - 1000MM - Rails - White Premium
AL09	GGP/07	WA ONLY - 1200MM - Rails - White Premium
AL09	GGP/08	WA ONLY - 1500MM - Rails - White Premium
AL09	GGP/09	WA ONLY - 1800MM - Rails - White Premium
AL09	GGP/10	WA ONLY - 2100MM - Rails - White Premium
AL09	GGP/11	WA ONLY - 2400MM - Rails - White Premium
AL09	GGP/12A	WA ONLY - 300MM X 25MM Angled Rails - Stainless Steel
AL09	GGP/12	WA ONLY - 300MM X 25MM Rails - Stainless Steel
AL09	GGP/13	WA ONLY - 450MM X 25MM Rails - Stainless Steel
AL09	GGP/14	WA ONLY - 600MM X 25MM Rails - Stainless Steel
AL09	GGP/15	WA ONLY - 750MM X 25MM Rails - Stainless Steel
AL09	GGP/16	WA ONLY - 900MM X 25MM Rails - Stainless Steel
AL09	GGP/17	WA ONLY - 1200MM X 25MM Rails - Stainless Steel
AL09	GGP/18	WA ONLY - 300MM X 32MM Rails - Stainless Steel
AL09	GGP/19	WA ONLY - 450MM X 32MM Rails - Stainless Steel
AL09	GGP/20	WA ONLY - 600MM X 32MM Rails - Stainless Steel
AL09	GGP/21	WA ONLY - 750MM X 32MM Rails - Stainless Steel
AL09	GGP/22	WA ONLY - 900MM X 32MM Rails - Stainless Steel
AL09	GGP/23	WA ONLY - 1200MM X 32MM Rails - Stainless Steel
AL09	GGP/25	WA ONLY - Stainless Steel 'L' Shaped Rail
AL09	GGP/58	WA ONLY - External Rail - 32MM Galv Pipe 'U' Shaped Rail
AL09	GGP/59	WA ONLY - External Rail – 32MM Galv Pipe 'L' Shaped Rail
AL09	GGP/82	WA ONLY - Bath Rail - Clamp On
AL09	GGP/64	WA ONLY - Remove Existing Rail

**AL11 - Ramps – Portable**Available to:  

AL11	GGP/45	WA ONLY - 900MM Aluminium Ramps
AL11	GGP/46	WA ONLY - 1200MM Aluminium Ramps
AL11	GGP/47	WA ONLY - 1800MM Aluminium Ramps

**AL14 - Step Modifications**Available to:  

AL14	GGP/44	WA ONLY - Wooden False Step, per square metre
------	--------	---

**AL21 - Home Modifications – Minor**Available to:  

AL21	GGP/26	WA ONLY - Curtain Rods - Shower Up To 900MM
AL21	GGP/27	WA ONLY - Curtain Rods - Shower Over 900MM
AL21	GGP/28	WA ONLY - Curtain Rods - Shower 900MM X 900MM 'L' Shaped
AL21	GGP/29	WA ONLY - Curtain Rods - Shower 750MM X 1800MM 'L' Shaped
AL21	GGP/30	WA ONLY - Fixings - Rails
AL21	GGP/43	WA ONLY - Wooden Ramps
AL21	GGP/100	WA ONLY - Rubber Ramp - 900 X 150 X 15MM
AL21	GGP/101	WA ONLY - Rubber Ramp - 900 X 200 X 20MM
AL21	GGP/102	WA ONLY - Rubber Ramp - 900 X 250 X 25MM
AL21	GGP/103	WA ONLY - Rubber Ramp - 900 X 300 X 30MM
AL21	GGP/104	WA ONLY - Rubber Ramp - 900 X 350 X 35MM
AL21	GGP/105	WA ONLY - Rubber Ramp - 900 X 400 X 40MM
AL21	GGP/106	WA ONLY - Rubber Ramp - 900 X 450 X 45MM
AL21	GGP/107	WA ONLY - Rubber Ramp - 900 X 500 X 50MM

AL21	GGP/108	WA ONLY - Rubber Ramp - 900 X 550 X 55MM
AL21	GGP/109	WA ONLY - Rubber Ramp - 900 X 600 X 60MM
AL21	GGP/110	WA ONLY - Rubber Ramp - 900 X 650 X 65MM
AL21	GGP/111	WA ONLY - Rubber Ramp - 900 X 700 X 70MM
AL21	GGP/112	WA ONLY - Rubber Ramp - 900 X 750 X 75MM
AL21	GGP/113	WA ONLY - Rubber Ramp - 900 X 800 X 80MM
AL21	GGP/114	WA ONLY - Rubber Ramp - 900 X 850 X 85MM
AL21	GGP/115	WA ONLY - Rubber Ramp - 900 X 900 X 90MM
AL21	GGP/62	WA ONLY - Reposition Toilet Roll Holder/Rail
AL21	GGP/63	WA ONLY - Re-swing Doors
AL21	GGP/65	WA ONLY - Remove Shower Screen/Door
AL21	GGP/66	WA ONLY - Magnetic Door Catch
AL21	GGP/70	WA ONLY - Threshold Extension Door Step
AL21	GGP/72	WA ONLY - Fix Bed Rail To Bed
AL21	GGP/81	WA ONLY - Shower Floor - Wooden

### AZ01 - Bath Seat/Board

Available to:   

AZ01	GGP/76	WA ONLY - Standard Wooden Bathboard
AZ01	GGP/77	WA ONLY - Adjustable Wooden Bathboard
AZ01	GGP/78	WA ONLY - Raised Wooden Bathboard
AZ01	GGP/79	WA ONLY - Raised Extended Bathboard
AZ01	GGP/80	WA ONLY - Bathboard Raisers

## AZ02 - Shower – Hand Held

Available to:   

AZ02	GGP/48	WA ONLY - Shower On Variance Rail
AZ02	GGP/49	WA ONLY - Standard Shower Hose - 2 MTR
AZ02	GGP/50	WA ONLY - Single End Push On Shower Hose
AZ02	GGP/51	WA ONLY - Double End Push On Shower Hose
AZ02	GGP/52	WA ONLY - Switchcock
AZ02	GGP/53	WA ONLY - Hose - 2 MTR
AZ02	GGP/54	WA ONLY - Bracket
AZ02	GGP/55	WA ONLY - Hand Piece
AZ02	GGP/56	WA ONLY - Elbow
AZ02	GGP/57	WA ONLY - S' Hook

## AB03 - Bed Blocks

Available to:       

AB03	GGP/31	WA ONLY - Wooden Bed Legs
AB03	GGP/32	WA ONLY - Wooden Bed Blocks
AB03	GGP/33	WA ONLY - Angle Iron Bed Legs

## Start ordering now

It is simple and easy. All you have to do is follow the steps below.

1. Visit our website [www.mobilityservices.com.au](http://www.mobilityservices.com.au)
2. Click 'Start here' at the top of the page
3. Complete the short registration form
4. In a few seconds you'll receive an email with your username and password to start ordering immediately through our website or via our free iPad application.

To download the free 'MFS – Mobility and Functional Support' iPad app search for MFS in the Apple App Store.

You can also place orders by faxing your DVA direct order form to 1800 653 556 or +61 7 3360 7867.

[www.mobilityservices.com.au](http://www.mobilityservices.com.au)

Call: 1800 857 715

Email: [mobility@allianz-assistance.com.au](mailto:mobility@allianz-assistance.com.au)

Fax: 1800 653 556

